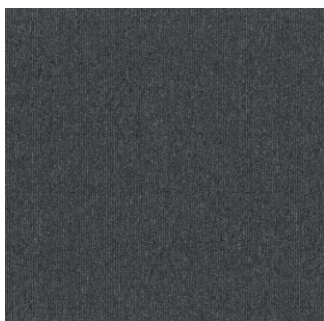




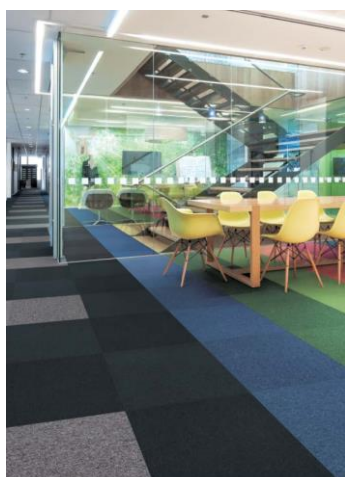
## TOLI Carpet Tile

### GA-400



GA4004

25 colorways available



GA4003/GA4025/GA4028/GA4031/  
GA4041/GA4042/GA4043

#### Technical Specifications

<b>Product Description</b>	Polypropylene Tufted Carpet Tile
<b>Surface</b>	Polypropylene 100%
<b>Dyeing Method</b>	Solution Dyed
<b>Base Fabric</b>	Nonwoven Polyester
<b>Backing</b>	PVC and Glass Fiber
<b>Size</b>	500mm x 500mm x 6.0mm
<b>Pile Height</b>	3.0mm (loop pile)
<b>Gauge &amp; Stitches</b>	1/10 <sup>th</sup> gauge 14.0 stiches/inch
<b>Yarn Weight</b>	16.5 oz/sq.yd
<b>Packing &amp; Net Weight</b>	20pcs/box=5m2/box (22.0 kg/box)
<b>Origin</b>	Made in Japan

#### Performance Testing

<b>Antistatic Property</b>	Less than 1.0 kv (JIS L 1021-16, at 23 degrees C, 25%RH)
<b>Electrostatic Propensity</b>	Maximum Average 0.1 kv (AATCC 134)
<b>Smoke Density</b>	Less than 450 (ASTM E662)
<b>Surface Flammability</b>	Passes DOC FF 1-70 (ASTM D2859)
<b>Flame-retardant Property</b>	Fire Defense Law in Japan Authorized No. E0970014
<b>Dimensional Stability</b>	Less than 0.1% change (ASTM D7570)
<b>Tuft Bind</b>	7.1 Lbs. (ASTM D1335)
<b>Delamination Strength</b>	4.8 Lbs/Inch (ASTM D3936)
<b>Colorfastness to Light</b>	Rating 5.0 = No Change (AATCC 16)

#### Way of Installation



quarter turn

#### Product Notes

Specifications are subject to nominal manufacturing variances.  
Material supply and/or manufacturing processes may necessitate changes without notice.  
Colors may vary slightly from dye lot to dye lot.  
The use of chair pads under roller caster chairs may be required in order to maintain sufficient performance of the product.