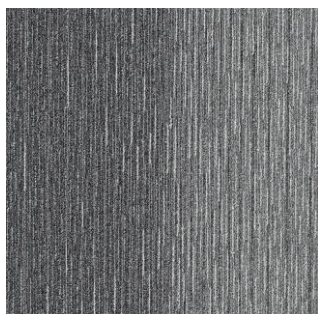




TOLI Carpet Tile

GA-590



GA5902
2 colorways available



GA5902/GA4003

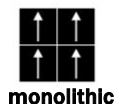
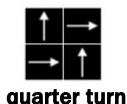
Technical Specifications

Product Description	Polypropylene Tufted Carpet Tile
Surface	Polypropylene 100%
Dyeing Method	Solution Dyed
Base Fabric	Nonwoven Polyester
Backing	PVC and Glass Fiber
Size	500mm x 500mm x 7.0mm
Pile Height	H 4.5mm / L 3.0mm (textured loop pile)
Gauge & Stitches	1/10 th gauge 12.5 stiches/inch
Yarn Weight	14.7 oz/sq.yd
Packing & Net Weight	20pcs/box=5m2/box (22.1kg/box)
Origin	Made in Japan

Performance Testing

Antistatic Property	Less than 1.0 kv (JIS L 1021-16, at 23 degrees C, 25%RH)
Electrostatic Propensity	Maximum Average 0.0 kv (AATCC 134)
Smoke Density	Less than 450 (ASTM E662)
Surface Flammability	Passes DOC FF 1-70 (ASTM D2859)
Flame-retardant Property	Fire Defense Law in Japan Authorized No. E2180233
Dimensional Stability	Less than 0.1% change (ASTM D7570)
Tuft Bind	6.0 Lbs. (ASTM D1335)
Delamination Strength	9.0 Lbs/Inch (ASTM D3936)
Colorfastness to Light	Rating 5.0 = No Change (AATCC 16)

Way of Installation



Product Notes

Specifications are subject to nominal manufacturing variances.
 Material supply and/or manufacturing processes may necessitate changes without notice.
 Colors may vary slightly from dye lot to dye lot.
 The use of chair pads under roller caster chairs may be required in order to maintain sufficient performance of the product.