



WVP8001~
WVP8536
F ★ ★ ★ ★

DECOPOWER TOLI WALL 2024-2027

All Items Certified as Non-Combustible (Japan Fire Defence Law)

Contents

- 1 Product code list - Functional, Recommendations for renovation, long-term availability items
- 2 Description: Functions
- 12 Quality standards
- 13 Maintenance Precautions
- 14 Handling Precautions
- 15 About Downlights
- 16 Installation Precautions (General Information)
- 17 Precautions for Product-Specific Installation
- 19 Installation Precaution List
- 20 Specialty Wallcovering - Digital Print Wall
- 21 Key Points for Installation

Old Product Code / New Product Code

- 23 DECOPOWER 2024-2027
- 29 POWER1000 2021-2024
- 35 DECOPOWER SELECT 2024-2027
- 36 Non-combustible certified 1000 2021-2024

Product code list - Functional, Recommendations for renovation, long-term availability items

※Antimildew: All (536items)

EVAL® Antibacterial & stain-resistant film	37 items	8109 8110 8114 8124 8125 8127 8129 8429 8430 8431 8432 8433 8434 8439 8440 8441 8442 8443 8444 8445 8446 8447 8448 8449 8450 8451 8452 8453 8454 8455 8456 8477 8478 8479 8480 8481 8482
EVAL® Antibacterial & stain-resistant film, durable-surface type	27 items	8126 8133 8134 8435 8436 8437 8438 8457 8458 8459 8460 8461 8462 8463 8464 8465 8466 8467 8468 8469 8470 8471 8472 8473 8474 8475 8476
EVAL® Antibacterial & stain-resistant film, durable-type	59 items	8370 8371 8372 8373 8374 8375 8376 8377 8378 8379 8380 8381 8382 8383 8384 8385 8386 8387 8388 8389 8390 8391 8392 8393 8394 8395 8396 8397 8398 8399 8400 8401 8402 8403 8404 8405 8406 8407 8408 8409 8410 8411 8412 8413 8414 8415 8416 8417 8418 8419 8420 8421 8422 8423 8424 8425 8426 8427 8428
EVAL® Antibacterial & stain-resistant film, super durable type	55 items	8022 8061 8062 8122 8123 8320 8321 8322 8323 8324 8325 8326 8327 8328 8329 8330 8331 8332 8333 8334 8335 8336 8337 8338 8339 8340 8341 8342 8343 8344 8345 8346 8347 8348 8349 8350 8351 8352 8353 8354 8355 8356 8357 8358 8359 8360 8361 8362 8363 8364 8365 8366 8367 8368 8369
FUNCRARE® Antibacterial & stain-resistant film	15 items	8483 8484 8485 8486 8487 8488 8489 8490 8491 8492 8493 8494 8495 8496 8497
Antiviral wallcovering (antibacterial)	31 items	8132 8498 8499 8500 8501 8502 8503 8504 8505 8506 8507 8508 8509 8510 8511 8512 8513 8514 8515 8516 8517 8518 8519 8520 8521 8522 8523 8524 8525 8526 8527
Anti-allergen wallcovering (antibacterial)	13 items	8179 8188 8189 8190 8528 8529 8530 8531 8532 8533 8534 8535 8536
Cyclic deodorization (antibacterial)	17 items	8170 8171 8172 8173 8174 8175 8185 8287 8288 8289 8290 8294 8295 8302 8303 8304 8305
Photocatalytic deodorization (antibacterial)	17 items	8154 8155 8156 8160 8161 8164 8165 8184 8201 8202 8203 8204 8205 8248 8249 8250 8301
Odor-proof antibacterial and deodorant	13 items	8192 8193 8194 8195 8262 8263 8264 8265 8266 8267 8268 8269 8270
Antibacterial, durable surface, water-repellent, stretchable, lightweight	29 items	8206 8207 8208 8209 8210 8211 8212 8213 8214 8215 8216 8217 8218 8219 8220 8221 8222 8223 8224 8225 8226 8227 8228 8229 8238 8239 8240 8241 8242
Durable surface, water-repellent	21 items	8010 8011 8012 8013 8014 8015 8100 8243 8244 8245 8246 8247 8298 8299 8300 8306 8307 8308 8309 8310 8311
Durable surface (except stain resistant, water-repellent)	33 items	8001 8002 8003 8006 8016 8018 8019 8020 8028 8041 8042 8047 8049 8050 8051 8052 8053 8054 8055 8056 8057 8058 8059 8060 8063 8064 8065 8066 8067 8068 8130 8148 8169
Antibacterial, water-repellent	29 items	8079 8080 8081 8116 8117 8199 8200 8230 8231 8232 8233 8234 8235 8236 8237 8251 8252 8253 8254 8258 8259 8260 8261 8271 8272 8273 8274 8275 8276
Antibacterial (except cyclic deodorant, photocatalytic deodorant, odor-proof antibacterial and deodorant, water repellent, antiviral, anti-allergen wallcovering)	50 items	8046 8069 8070 8076 8077 8078 8088 8089 8090 8093 8096 8097 8105 8106 8115 8118 8119 8120 8121 8128 8146 8151 8152 8153 8255 8256 8257 8277 8278 8279 8280 8281 8282 8283 8284 8285 8286 8291 8292 8293 8296 8297 8312 8313 8314 8315 8316 8317 8318 8319
Water-repellent (except durable surface, antibacterial)	23 items	8005 8034 8035 8036 8048 8084 8085 8137 8138 8139 8140 8141 8142 8176 8177 8182 8183 8186 8187 8191 8196 8197 8198

EVAL® is a registered trademark of Kuraray Co., Ltd. FUNCRARE® is a registered trademark of Gunze Limited.

Recommendations for renovation	89 items	8031 8032 8033 8034 8035 8036 8037 8038 8039 8040 8048 8170 8171 8172 8173 8174 8175 8176 8177 8178 8179 8180 8181 8182 8183 8184 8185 8186 8187 8188 8189 8190 8191 8192 8193 8194 8195 8196 8197 8198 8199 8200 8201 8202 8203 8204 8205 8206 8207 8208 8209 8210 8211 8212 8213 8214 8215 8216 8217 8218 8219 8220 8221 8222 8223 8224 8225 8226 8227 8228 8229 8230 8231 8232 8233 8234 8235 8236 8237 8238 8239 8240 8241 8242 8243 8244 8245 8246 8247
Long-term availability Products (until 2030)	16 items	8170 8185 8201 8206 8207 8209 8210 8211 8219 8220 8221 8224 8226 8227 8228 8229

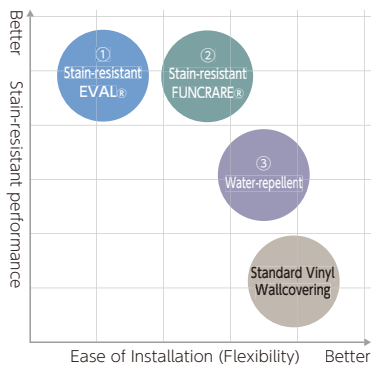
Description: Functions

Functions		Key Performance Features	Refer to
Stain-resistance	① EVAL® , antibacterial & stain-resistant film	Resistant to oily stains. It is also more resistant to scratches and cigarette-smoke stains than standard vinyl wallcovering.	p.3 ~ 4
	② FUNCRARE® , antibacterial & stain-resistant film	Resistant to water stains. Its flexibility makes winter installations easier, allowing for a neat fit around external corners.	
	③ Water-repellent	Resistant to water stains and easy to wipe clean. The ease of installation is comparable to that of standard vinyl wallcovering.	
Antiviral wallcovering (antibacterial)		Wallcovering coated with antiviral agents on the surface. It alters the surface proteins of viruses, reducing the number of active viruses. SIAA Registered.	p.5
Anti-allergen wallcovering (antibacterial)		This wallpaper reacts to allergens such as dust mite droppings, mite carcasses, and pollen that adhere to its surface.	p.6
Odor control	① Cyclic deodorization	Absorbs and neutralizes odor-causing substances. Its cyclical mechanism ensures long-lasting effectiveness.	p.7 ~ 8
	② Photocatalytic deodorization (antibacterial)	Eliminates unpleasant odors through the combined effects of deodorizing agents and light.	
	③ Odor-proof antibacterial and deodorant	The antibacterial properties of silver ions (Ag ⁺) provide immediate action to inhibit the growth of bacteria, preventing odor formation.	
	④ FUNCRARE® , antibacterial & stain-resistant film	FUNCRARE® now combines its stain-resistant properties with added deodorizing performance.	
Scratch-resistance	① Durable surface	This designation is applied to products that achieve a performance rating of 'Grade 4 to 5' according to specified test methods. (For durable surface, there are two types: one with EVAL® film applied and one without.)	p.9
	② Stain-resistant durable type	This wallcovering is more resistant to scratches and impact compared to standard surface reinforcement. Additionally, the EVAL® film on the surface makes it easier to clean and enhances its maintenance properties. Recommended for those concerned about scratches and stains.	
	③ Stain-resistant super durable type	It offers greater scratch resistance compared to the standard stain-resistant durable type. The EVAL® film on the surface also enhances cleanability and provides excellent maintenance properties. Recommended for those concerned about scratches and stains.	
Lightweight, stretchable		The surface layer stretches to reduce minor cracks caused by substrate movement (shifting or warping)	p.10
Antibacterial		Inhibits the growth of bacteria on the wallcovering surface. *The antibacterial wallcovering data is based on a 24-hour test, whereas the Odor-proof antibacterial and deodorant data is based on a 3-hour test.	p.11
Antimildew Properties		Inhibits the growth of mold on the wallcovering surface. *All wallcovering included in DECOPOWER are antimildew.	

Functional Wallcovering Comparison Chart

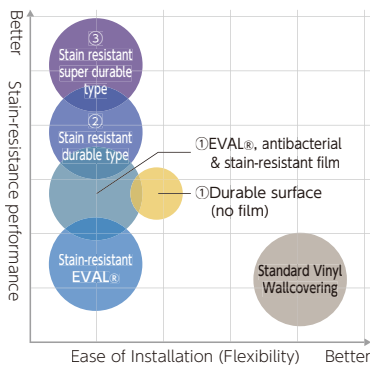
The circled numbers in the graph correspond to the numbers listed in the functional descriptions above (items without circled numbers are for reference).

Stain-resistance



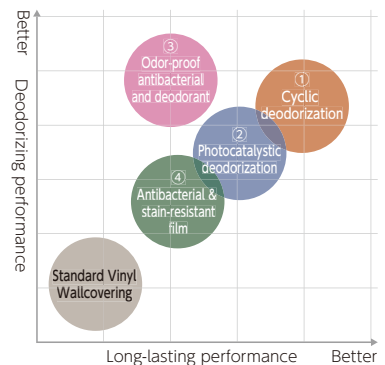
- The stain-resistant performance of EVAL® and FUNCRARE® varies slightly depending on the substance but is considered equivalent overall.
- Water-repellent is not indicated as a stain-resistant feature.

Scratch-resistance



- There are products with increasing scratch resistance in the following order: Durable surface, Stain-resistant durable type, and Stain-resistant super durable type. For durable surface, there are two types: one with EVAL® film applied and one without.

Odor control



- The Cyclic deodorizing wallcovering captures and neutralizes odor-causing compounds. Its performance is repeatable even after deodorizing, ensuring long-lasting effectiveness.
- The antibacterial and deodorizing wallpaper uses silver ions (Ag⁺) for an antibacterial effect that inhibits bacterial growth and provides deodorizing benefits, offering higher odor-eliminating performance than Cyclic deodorizing products.

The above data represents typical values and is not a guaranteed result. Results may vary slightly depending on usage conditions and weather factors.

Description: Functions



Stain-resistance

The stain-resistant wallcovering is film-coated and exhibits excellent stain prevention performance, rated "Grade 4 to 5" for wiping off specified substances. 4 types are available for stain-resistant wallcovering. Also, there are 2 types of film, "EVAL®" and "FUNCRARE®".

Characteristics of EVAL®

Products using EVAL® film are labeled as **Stain-Resistant** **Hard Type** **S-Hard Type**

Surface durability	The surface is hardened, making it resistant to scratches. Please note that certain products may not have durable surface performance depending on the surface texture.
Resistant to oil stains	It can wipe away not only water stains but also stubborn oil stains. Additionally, it is resistant to stains from tobacco smoke.
Antibacterial	It has the ability to inhibit the growth of E. coli and Staphylococcus aureus. It also offers excellent hygiene.
Chemical resistance	It has good resistance against chemicals

※ For details, please refer to the functionality descriptions for each product code and the 'Functional Wallcoverings, Recommended for Renovation, and Long-Term Availability Product Code List' on page 1. EVAL® is a registered trademark of Kuraray Co., Ltd.

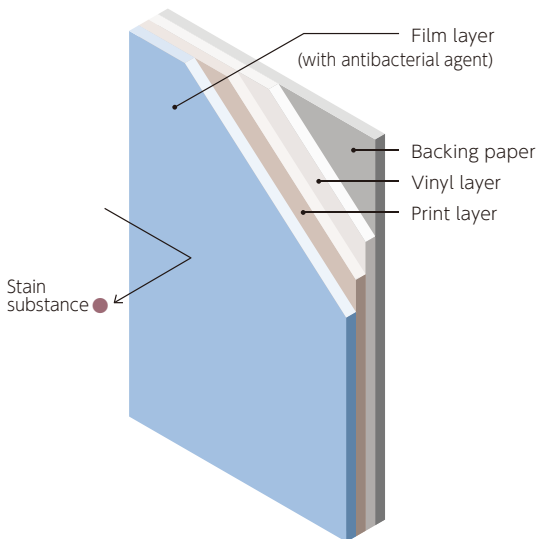
Characteristics of FUNCRARE®

Products using FUNCRARE® film are marked as **Stain-Resistant F / Deodorizing**

Ease of Installation	The film's flexibility allows for easy installation around external corners and joints, improving installation efficiency. It is especially effective for installation in cold climates.
Resistant to water stains	This performance is ideal for use in wet areas. Additionally, adhesive residue from installation is easy to wipe off, and remaining adhesive forms a thin film after drying, which can be peeled away.
Antibacterial	It has the ability to inhibit the growth of E. coli and Staphylococcus aureus. It also offers excellent hygiene.

FUNCRARE® is a registered trademark of Gunze Limited.

Structural Diagram



Stain-resistant function (Grade)

Contaminant	Coffee	Soy sauce	Crayon	Water-base pen
Remover	Water	Water	Neutral detergent	Neutral detergent
EVAL® film	5	5	5	4
FUNCRARE® film	5	5	4	5
Standard vinyl wallcovering	2~4	2~4	1~3	1~3

※ Stain resistance may vary slightly depending on the product. Please use this as a reference.

Grade	Criteria	<Stain substance> Coffee, soy sauce, crayon, water-base pen	<Test method> Compliant with the Wallcoverings Association's 'Stain-Resistant Wallcovering Performance Standards'. Each contaminant is applied to the surface as specified, left for 24 hours, and then carefully wiped off using the designated cleaning agent.
5	No stains remain		
4	Almost no stains remain		
3	Few stains remain		
2	Stains remain		
1	Stains are strongly noticeable.		

<Pass/Not Pass> According to the evaluation criteria in the table above, products that achieve a performance rating of Grade 4 or higher pass.

Test result (antibacterial function)

Antibacterial Activity Value	
E. coli	Staphylococcus aureus
2.0 <	2.0 <



EVAL®

FUNCRARE®

Chemical resistance: EVAL® film

In accordance with the 'Stain-Resistant Wallcovering Performance Test' (Grade)

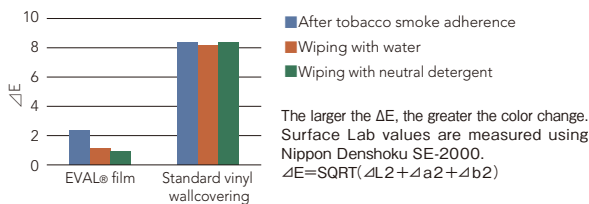
	EVAL®	Standard vinyl wallcovering (light color)	Standard vinyl wallcovering (dark color)
Sodium Hypochlorite (5%)	5	5	2
Alcohol Disinfectant (Ethanol 95 vol%)	5	5	3
Hydrogen Peroxide Solution (Oxydol)	5	5	5
Wellpas	5	5	3
Cresol Soap Solution (3 vol%)	5	4	3
Povidone-Iodine (10%)	5	3	3

<Test Method> After exposing to various chemicals for 24 hours, the evaluation is conducted by wiping with water or a neutral detergent.

EVAL® film stain resistance test results against tobacco smoke components

The film resists tobacco smoke stains and odors.

■ Stain resistance and cleanability evaluation for tobacco smoke components.



<Test Method> Place five lit cigarettes at the bottom of a 20ℓ metal pail, and set the film sample attached to a backing above it. Repeat this process 8 times (a total equivalent of 40 cigarettes, one batch per 10 minutes). Afterward, wipe with water and neutral detergent, then measure ΔE.

The above data represents typical values and is not a guaranteed result. Results may vary slightly depending on usage conditions and weather factors.



Antibacterial & Stain-Resistant Film

This is a deodorizing type of FUNCRARE® film with excellent flexibility. For the features and stain-resistant performance of FUNCRARE® film, please refer to page 3. Please refer to pages 7-8 for deodorizing performance.

<Handling Precautions>

■ Stain resistance ■ Antibacterial & stain-resistant film

- If the surface film is damaged, that area will lose its stain-resistant function. Please take care to avoid scratches. When wiping off stains, please use a soft cloth or a toothbrush.
- Excessive water on the wallcovering is strictly prohibited. When wiping off stains, please use a well-wrung cloth. Be careful, as stains that seep into joints may cause peeling or discoloration.
- Stains that have accumulated over a long period, such as nicotine stains from tobacco, are difficult to remove completely.
- 'Stain-resistant' wallcovering does not mean that stains will not adhere. A surface film coating is applied to prevent stains from penetrating, making them easier to clean.

<Installation Precautions>

■ Stain resistance ■ Antibacterial & stain-resistant film

- Avoid installing on ceilings, as the joint lines may be more visible than on walls due to lighting conditions, making installation more challenging.
- Please note that installation costs may be higher due to the increased difficulty of installation compared to standard vinyl wallcoverings.
- When applying adhesive, fold it loosely and avoid stacking. Folding too tightly may cause creases.
- Its thin and glossy film easily reveals any irregularities in the substrate. Please apply putty carefully and ensure a smooth finish on the substrate.
- Since the vinyl chloride resin layer is laminated with a stain-resistant film (EVAL® or FUNCRARE®), it has a certain hardness, making it difficult to remove air during installation. Additionally, it is prone to warping and blistering in low temperatures, so caution is required.
- Care should be taken to avoid unevenness or horizontal streaks caused by adhesive buildup. This is especially noticeable under conditions with downlighting, indirect lighting, or angled light from windows. During installation, please ensure to check under the same or equivalent lighting conditions as the permanent lighting.
- Since the adhesive moisture does not dry easily from the surface, installation on low-absorption substrates (such as concrete or mortar) is even more challenging.

Ensure a smooth substrate and use a thicker adhesive for installation. Additionally, apply extra adhesive to external corners and joints as needed. Please also refer to 'Installation Precautions' on page 20 and 'Product-Specific Installation Precautions' on pages 21-22.

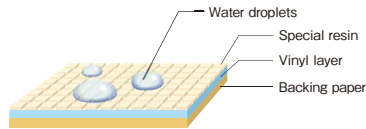


Water repellent

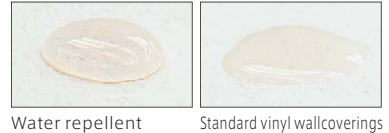
It is resistant to water stains and easy to maintain.

- It repels water stains into droplets, allowing for quick and easy wiping.
- With its flexibility and ease of handling, along with easy adhesive cleanup, it offers excellent workability during installation.

Structure of Water-Repellent Wallcovering (Illustrative Diagram)



Water-Repellency Comparison



<Handling Precautions>

■ Water repellent

- If stains adhere, please wipe them off using water or a neutral detergent. However, some types of stains may not be completely removable.
- The surface is treated with a special resin coating. However, as it is not a complete film, water-based stains left on the surface for an extended period may penetrate into the wallcovering and become difficult to remove. Please wipe it off promptly after it adheres.
- When wiping off stains, please use a soft cloth or a toothbrush.
- Excessive water on the wallcovering is strictly prohibited. When wiping off stains, please use a well-wrung cloth. Be cautious, as stains that seep into joints may cause peeling or discoloration.
- If priority is on stain removal performance, 'Stain-Resistant' wallcoverings are recommended.

■ Characteristics Comparison Table (Reference)

Functions	Stain Resistance	Ease of Stain Removal (Immediately After Adherence)	Ease of Stain Removal (After Long-Term Adherence)	Installation Difficulty
Water repellent	○	○	△	○
Stain-resistant EVAL®	○	◎	○	△~×
Stain-resistant FUNCRARE®	○	◎	○	△
Standard vinyl wallcovering	△	△	△~×	○

<Evaluation criteria> ○...Good △...Care required ×...Difficult

The above data represents typical values and is not a guaranteed result. Results may vary slightly depending on usage conditions and weather factors.

Description: Functions



Antiviral wallcovering

- The antiviral components on the wallcovering surface reduce the number of viruses.
- It offers excellent antibacterial properties, ensuring cleanliness.



SIAA
ISO 21702
抗ウイルス加工
有機系抗ウイルス剤・
コーティング表面層
JP0612352A0002W



SIAA
抗菌加工
有機系抗菌剤・
コーティング表面層
JP0112352A0001Q

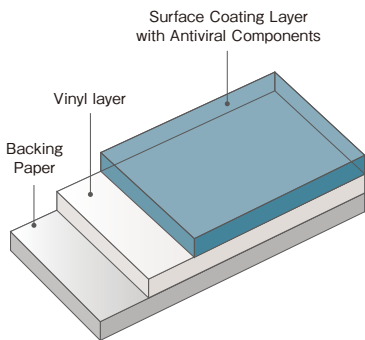
TOLI antiviral wallcoverings are registered products with SIAA-certified antiviral and antibacterial treatments.

Reduces the number of specific viruses on the product surface.

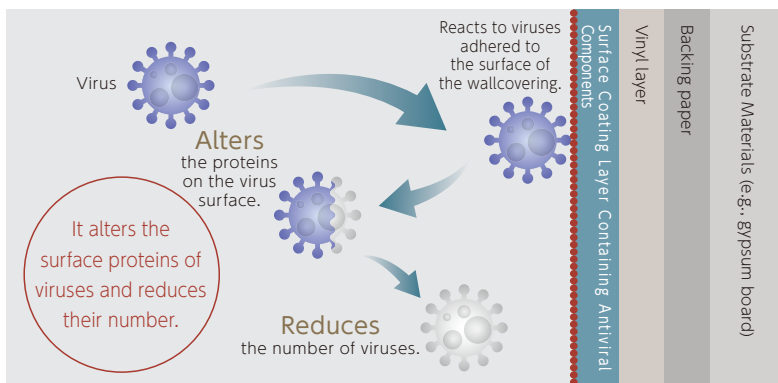
The SIAA mark is displayed on products that are evaluated based on ISO 21702 and meet the quality control and information disclosure guidelines established by the Society of Industrial Antimicrobial Articles (SIAA).

- Antiviral treatment is not intended for the treatment or prevention of diseases.
- Complies with SIAA safety standards.

Structural Diagram

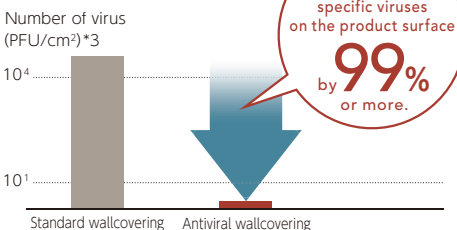


Antiviral Mechanism



<Illustrative Diagram>

Antiviral Test Results



Testing Organization: (General Incorporated Foundation) Nissenken Quality Evaluation Center
 Testing Method: ISO 21702
 Test Virus: Virus A *1 (Non-enveloped *2)

- Antiviral treatment is not intended for the treatment or prevention of diseases.
- The SIAA mark is displayed on products that are evaluated based on ISO 21702 and meet the quality control and information disclosure guidelines established by the Society of Industrial Antimicrobial Articles (SIAA).

*1 Due to regulations under the Act on Securing Quality, Efficacy, and Safety of Pharmaceuticals, Medical Devices, etc. (PMDA Law), specific virus names cannot be listed, and therefore 'Virus A' is used.

*2 A membrane-like structure observed in virus particles.

*3 PFU stands for Plaque-Forming Unit, an indicator of the number of viruses measured using the plaque assay method.

Antibacterial Performance Test Results

Antibacterial Activity Value	
E. coli	Staphylococcus aureus
2.0 or higher	2.0 or higher

Safety of the Chemicals Used

Items	Chemical Data
Acute Oral Toxicity	>2,000mg/kg
Primary Skin Irritation	No Irritation
Mutagenicity	Negative
Skin Sensitization	Negative

- Complies with SIAA safety standards.
- It does not have the effect of repelling viruses themselves.
- Antiviral treatment is not intended for the treatment or prevention of diseases. Furthermore, it does not guarantee infection prevention.
- This is not a product intended for medical purposes, such as pharmaceuticals or medical devices.
- Antiviral performance does not apply to all viruses. Furthermore, the same test results may not be obtained for all viruses.
- The antiviral performance may decrease due to surface conditions such as dirt or wear and tear.

The above data represents typical values and is not a guaranteed result. Results may vary slightly depending on usage conditions and weather factors. These are test results under specific conditions and do not represent proven effectiveness in actual use environments.



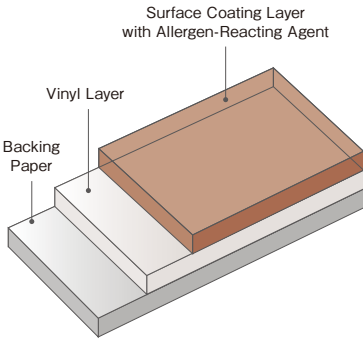
Anti-Allergen Wallcovering

Anti-allergen wallcoverings react to allergens such as dust mite droppings, mite carcasses, and pollen that adhere to the surface.

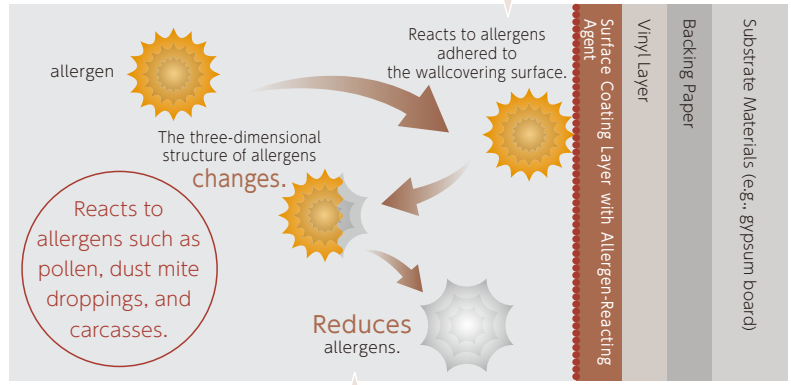
1. Adherence

Allergens brought into the home from outside or those on the floor can become airborne and adhere to the surface of the wallcoverings.

Structural Diagram



Anti-Allergen Mechanism



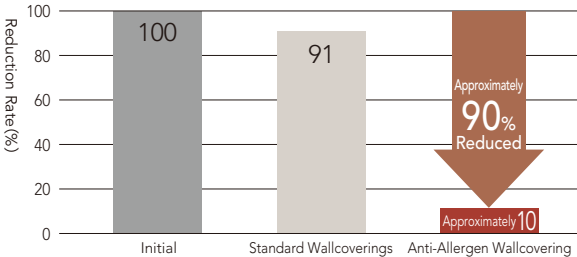
<Illustrative Diagram>

2. Reduce allergens

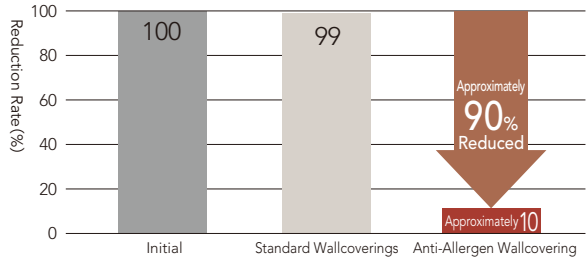
Reacts with the allergen-reacting agent coated on the wallcovering surface to reduce allergens.

Anti-Allergen Performance Test Results

Dust Mite Allergens



Cedar Pollen Allergens



<Test Method>

Dust mite allergen solution or cedar pollen allergen solution was applied to the wallcovering surface for 5 minutes, after which the solution was collected and used as the evaluation solution. The dust mite allergens or cedar pollen allergens in the evaluation solution were measured using the ELISA method (Enzyme-Linked Immunosorbent Assay). ELISA Method: A measurement method specified in the Ministry of Education, Culture, Sports, Science and Technology Notification No. 60 (established on March 31, 2009) "School Environmental Hygiene Standards"

Antibacterial

It has antibacterial properties, allowing for the maintenance of a clean environment. (For details on antibacterial performance, please refer to page 11.)



Special Note

- While it reacts to allergens such as dust mite droppings, carcasses, and pollen adhered to the wallcovering surface, this does not guarantee a reduction of allergens in indoor environments. Furthermore, it does not improve allergic conditions.
- For allergen control, regular cleaning and efforts to minimize the entry of pollen and other allergens from outside into the indoor environment are more important.

The above data represents typical values and is not a guaranteed result. Results may vary slightly depending on usage conditions and weather factors. These are test results under specific conditions and do not represent proven effectiveness in actual use environments.

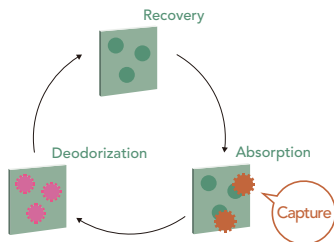
Description: Functions



Cyclic Deodorization

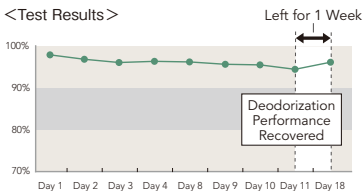
Absorbs and neutralizes odor-causing substances. Its cyclic mechanism ensures long-lasting effectiveness.

■ Cyclic Deodorization Mechanism



■ Deodorization Performance Test

<Test Results>



The following observations were confirmed from the above graph:

- Repeated tests show consistently high deodorization performance.
- Deodorization performance recovers even after being left for 1 week.

<Test Method>

- ① Place a 20 cm × 20 cm sample in a 5-liter Tedlar bag and inject 3 liters of formaldehyde (40 ppm).
- ② Measure the remaining formaldehyde in the bag every 24 hours using a gas detection tube, and calculate the removal rate.
- ③ After completing the measurement, adjust the concentration back to the initial level and repeat the measurement.



Odor-proof antibacterial and deodorant

The dual effects of the antibacterial and deodorizing properties of silver ions (Ag⁺) ensure a clean and fresh environment for your room. Silver ions (Ag⁺), with their immediate antibacterial action, inhibit the growth of odor-causing bacteria. Prevents odor formation before it occurs.

■ Antibacterial Performance Test

<Test Results>

Achieves the required performance of "< 0.63" in just 3 hours.

Bacteria Types	Antibacterial Properties		
	0 Hours	3 Hours	
E. coli	1.8×10 ⁴	Antibacterial, Deodorizing, and Odor-Eliminating	<0.63
		Untreated Products	2.2×10 ⁴
Staphylococcus aureus	1.3×10 ⁴	Antibacterial, Deodorizing, and Odor-Eliminating	<0.63
		Untreated Products	1.2×10 ⁴

<Test Method>

Prepare 5 cm × 5 cm samples of both antibacterial-treated and untreated products. Apply the test bacterial solution to the surface, cover it with a film, and incubate at 35°C with over 90% relative humidity for 3 hours. After incubation, measure the number of viable bacteria.



The antibacterial agent used in 'Antibacterial, Deodorizing, and Odor-Eliminating' is LunarSilver, a silver ion antibacterial agent patented by Antimicrobial Technology Co., Ltd. LunarSilver is a silver aqueous solution that successfully stabilizes silver ions at a high concentration and extends their ionized state for a longer duration, overcoming the challenges of handling silver ions. High level of safety has been demonstrated through various tests, including acute oral toxicity tests, primary skin irritation tests, skin sensitization tests, mutagenicity tests, and cytotoxicity tests. <http://www.antimicrobial.co.jp/>



Photocatalytic Deodorization

Eliminates odors through the combined effects of deodorizing agents and light.

- During the day, it demonstrates deodorizing effects through the combination of light, such as sunlight or fluorescent light, and deodorizing agents.
- Even at night when there is no light, the deodorizing agent absorbs odors and continues to provide deodorizing effects.

■ Deodorant performance

Neutralizes odor-causing components through the combined effects of deodorizing agents and light. Since deodorizing agents have a limited capacity, the deodorizing effect gradually diminishes over time.

■ Antibacterial

It has antibacterial properties, allowing for the maintenance of a clean environment. For details on antibacterial performance, please refer to page 11.



Antibacterial & stain-resistant film

This is the 'Deodorizing Type' of FUNCRAE® film, which excels in antibacterial and stain-resistant performance.

The FUNCRAE® film retains its key features, such as stain resistance, antibacterial performance, and flexibility, while adding deodorizing functionality.

It absorbs and neutralizes unpleasant odors, ensuring a long-lasting comfortable environment.

For details on "Stain-Resistant Performance" and "Handling Precautions", please refer to pages 3-4.

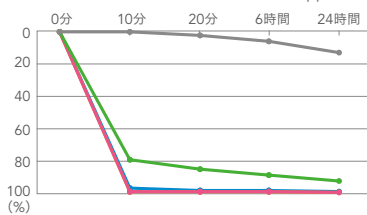
For details on "Antibacterial Performance", please refer to page 11.

The above data represents typical values and is not a guaranteed result. Results may vary slightly depending on usage conditions and weather factors. These are test results under specific conditions and do not represent proven effectiveness in actual use environments.

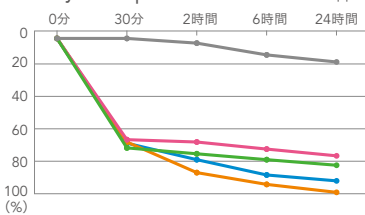
Outstanding Deodorizing Performance!

Deodorizing Odor-Causing Substances

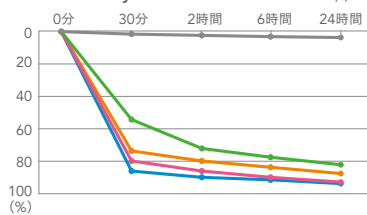
■ Ammonia (Initial Concentration: 200 ppm)



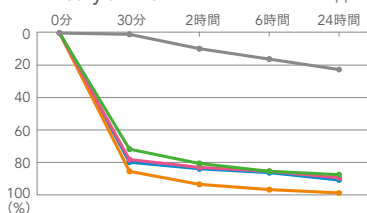
■ Methyl Mercaptan (Initial Concentration: 40 ppm)



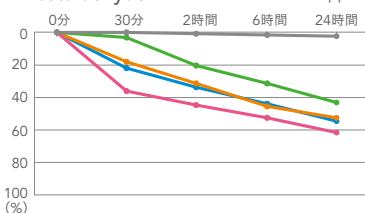
■ Formaldehyde (Initial Concentration: 80 ppm)



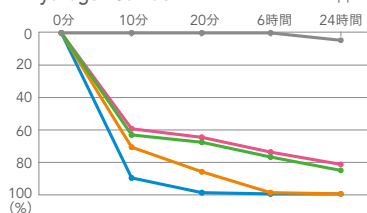
■ Trimethylamine (Initial Concentration: 60 ppm)



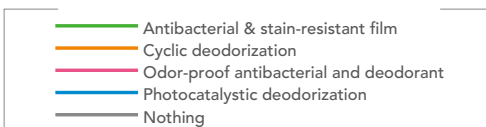
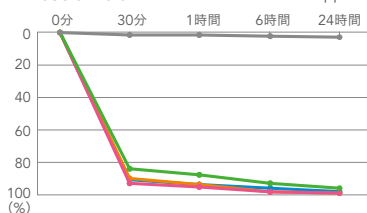
■ Acetaldehyde (Initial Concentration: 80 ppm)



■ Hydrogen Sulfide (Initial Concentration: 20 ppm)



■ Acetic Acid (Initial Concentration: 100 ppm)



<Test Method>

- ① Cover the back and edges of a 20 cm × 20 cm wallcovering sample, exposing only the surface.
- ② Place the wallcovering sample in a 5-liter Tedlar bag and inject 3 liters of odor gas at the specified concentration.
- ③ Measure the remaining odor components in the bag at specified intervals using a gas detection tube, and calculate the removal rate.

<Precautions for Selection>

The deodorizing function does not guarantee complete odor elimination. Perception of odors varies from person to person, and the effectiveness and duration may also differ depending on the environment.

The above data represents typical values and is not a guaranteed result. Results may vary slightly depending on usage conditions and weather factors. Additionally, the deodorizing effect may vary depending on the environment and the intensity of odors. Please use this information as a reference only.

Description: Functions



Durable surface

A durable surface makes this wallcovering resistant to scratches. It demonstrates excellent performance of "Grade 4 to 5" based on the specified test method (5 cycles of back-and-forth rubbing).

<Test Results>

	5 Cycles of Back-and-Forth Rubbing
Surface Reinforced Wallcoverings	Grade 4 to 5
Standard Vinyl Wallcoverings	Below Grade 3



<Test Method>

Based on the "Surface Reinforced Wallcovering Performance Standards" established by the Wallcoverings Association. Attach the specified friction device (200g load) and rub it back and forth over the test piece 5 times. Evaluate the degree of scratching visually.

<Evaluation Criteria>

Grade	Evaluation Criteria
Grade 5	No noticeable changes observed under visual inspection.
Grade 4	Minor surface scratches may be visible, but no significant tearing or damage to the surface layer is observed.
Grade 3	Tearing of the surface layer is clearly visible.
Grade 2	The surface is torn, and the backing material, such as paper, is clearly visible (length less than 1cm).
Grade 1	The surface is torn, and the backing material, such as paper, is clearly visible (length 1cm or more).

<Precautions for Selection>

- Some wallcoverings with a durable surface also feature stain-resistant performance. For details, please refer to the functionality descriptions for each product code and the "Functional Wallcovering Product Code List" on page 1.
- A durable surface reduces scratches and scuff marks but does not guarantee complete prevention of damage. Sharp objects or heavy items may cause scratches or tears, so please handle with care.



Stain-resistant durable type

This wallcovering is more resistant to scratches and impact compared to standard durable surface wallcoverings. Additionally, the EVAL® film on the surface makes it easier to clean and enhances maintenance efficiency. Recommended for those concerned about scratches and stains.

For details on the "Stain-Resistant Performance" and "Handling Precautions" of EVAL® film, please refer to pages 3-4.

<Test Results>

	5 Cycles of Back-and-Forth Rubbing (200g)	30 Cycles of Back-and-Forth Rubbing (200g)
Stain-resistant durable type	Grade 4 to 5	Grade 4 to 5
Stain-resistant and durable surface (Excluding the Above)	Grade 4 to 5	Below Grade 3
Standard Vinyl Wallcoverings	Below Grade 3	—



<Test Method>

Based on the "Surface Reinforced Wallcovering Performance Standards" established by the Wallcoverings Association. Attach the specified friction device (200g load) and perform 30 cycles of back-and-forth rubbing, which is six times the standard (5 cycles). Evaluate the degree of surface damage visually.

<Evaluation Criteria>

Grade	Evaluation Criteria
Grade 5	No noticeable changes observed under visual inspection.
Grade 4	Minor surface scratches may be visible, but no significant tearing or damage to the surface layer is observed.
Grade 3	Tearing of the surface layer is clearly visible.
Grade 2	The surface is torn, and the backing material, such as paper, is clearly visible (length less than 1cm).
Grade 1	The surface is torn, and the backing material, such as paper, is clearly visible (length 1cm or more).

<Precautions for Selection>

- The Stain-resistant durable type reduces surface scratches and scuff marks but does not guarantee complete prevention of damage. Sharp objects or heavy items may cause scratches or tears, so please handle with care.



Stain-resistant super durable type

Compared to Stain-resistant durable type wallcoverings, it offers greater resistance to scratches. Additionally, the EVAL® film on the surface makes it easier to clean and enhances maintenance efficiency. Recommended for those concerned about scratches and stains.

For details on the "Stain-Resistant Performance" and "Handling Precautions" of EVAL® film, please refer to pages 3-4.

<Test Results>

	5 Cycles of Back-and-Forth Rubbing (200g)	30 Cycles of Back-and-Forth Rubbing (200g)	100 Cycles of Back-and-Forth Rubbing (400g)
Stain-resistant super durable type	Grade 4 to 5	Grade 4 to 5	Grade 4 to 5
Stain-resistant durable type	Grade 4 to 5	Grade 4 to 5	Below Grade 3
Stain-resistant and durable surface (Excluding the Above)	Grade 4 to 5	Below Grade 3	—
Standard Vinyl Wallcoverings	Below Grade 3	—	—



<Test Method>

Based on the "Surface Reinforced Wallcovering Performance Standards" established by the Wallcoverings Association. Attach a friction device with twice the standard load (400g) and perform 100 cycles of back-and-forth rubbing, which is 20 times the standard (5 cycles). Evaluate the degree of surface damage visually (equivalent to 40 times).

<Evaluation Criteria>

Grade	Evaluation Criteria
Grade 5	No noticeable changes observed under visual inspection.
Grade 4	Minor surface scratches may be visible, but no significant tearing or damage to the surface layer is observed.
Grade 3	Tearing of the surface layer is clearly visible.
Grade 2	The surface is torn, and the backing material, such as paper, is clearly visible (length less than 1cm).
Grade 1	The surface is torn, and the backing material, such as paper, is clearly visible (length 1cm or more).

<Precautions for Selection>

- The Stain-resistant super durable type reduces surface scratches and scuff marks but does not guarantee complete prevention of damage. Sharp objects or heavy items may cause scratches or tears, so please handle with care.

<Installation Precautions>

- Durable surface type
- Stain-resistant durable type
- Stain-resistant super durable type

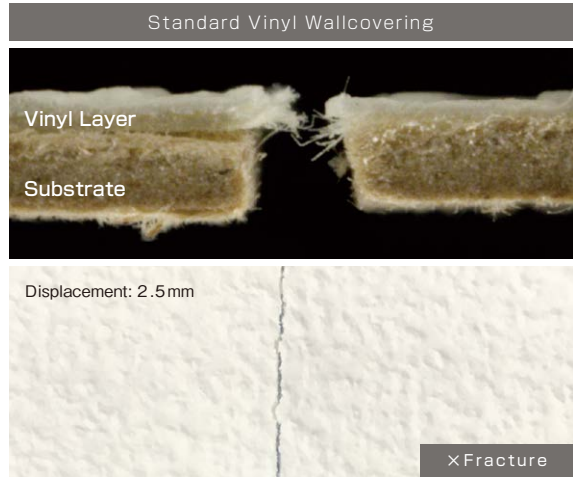
Ensure a smooth substrate and use a thicker adhesive for installation. Additionally, apply extra adhesive to external corners and joints as needed. Please refer to "Installation Precautions" on page 20 and "Product-Specific Installation Precautions" on pages 21-22.



Stretchability

■ The special composition gives the vinyl layer on the wallcovering surface stretchability.

Reduces minor cracks caused by substrate movement (e.g., shifting or warping).



<Test Method>

A tensile test was conducted using a test piece with double-sided tape applied to cardboard, evaluating the degree of tearing of the wallcovering at a displacement of 2.5mm.
Tensile Test Speed: 10 mm/min

<Handling Precautions>

■ Stretchability

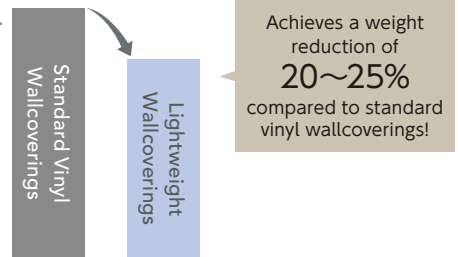
- While the stretchability of the wallcovering reduces cracking, it does not guarantee that cracks will not occur.



Lightweight

■ As a lightweight product, it reduces the burden during transportation and installation.

Combines thickness with reduced weight, making it ideal for ceiling applications.



The above data represents typical values and is not a guaranteed result.
Results may vary slightly depending on usage conditions and weather factors.

Description: Functions



Antibacterial

Antibacterial wallcoverings use antibacterial agents to inhibit the growth of bacteria, such as *E. coli* and *Staphylococcus aureus*, on the wallcovering surface. The number of viable bacteria after testing meets the specified standard of " <0.63 ".

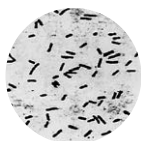
Antibacterial Performance Test Results

Bacteria Types	Antibacterial Properties		
	0 Hours	24 Hours	
E. coli	2.1 × 10 ⁴	Antibacterial Products	<0.63
		Untreated Products	6.8 × 10 ⁵
Staphylococcus aureus	1.9 × 10 ⁴	Antibacterial Products	<0.63
		Untreated Products	5.7 × 10 ⁴

<Test Method>

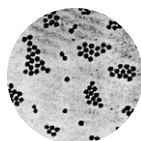
Based on the "Antibacterial Wallcovering Performance Standards" established by the Wallcoverings Association.

Prepare 5cm x 5cm samples of both antibacterial-treated and untreated products. Apply the test bacterial solution to the surface, cover it with a film, and incubate at 35°C with 90% relative humidity for 24 hours. After incubation, measure the number of viable bacteria.



E. coli

Typically a beneficial bacterium found in the intestinal tract of humans and animals, but can cause bladder infections or meningitis if it invades areas outside the intestines.



Staphylococcus aureus

A typical pyogenic bacterium. Proliferates in food and produces toxins. Can cause diarrhea, vomiting, and food poisoning.

<Handling Precautions>

Antibacterial

- This product inhibits the growth of bacteria such as *E. coli* and *Staphylococcus aureus*. However, it does not directly prevent infections.
- If the wallcovering surface is covered with dirt, the antibacterial performance may not function adequately.



Antimildew Properties

Inhibits the growth of mildew on the wallcovering surface (demonstrates a performance level of "0" based on the specified test method). All wallcoverings included in the Deco Power series are mold-resistant.

Display Method for Test Results

Fungal Growth	Result Display
No fungal growth observed under the naked eye or microscope.	0
No fungal growth visible to the naked eye, but clearly observed under the microscope.	1
Fungal growth visible to the naked eye, with affected areas covering less than 25% of the total sample area.	2
Fungal growth visible to the naked eye, with affected areas covering 25% to less than 50% of the total sample area.	3
Fungal hyphae grow significantly, with affected areas covering 50% or more of the total sample area.	4
The fungal hyphae have grown vigorously, covering the entire surface of the sample.	5

<Test Method>

Based on the "Antimildew Wallcovering Performance Standards" established by the Wallcoverings Association.

Mold Testing Procedure

Mold is applied to the wallcovering surface and incubated at a temperature of 24±1°C or 29±1°C with a relative humidity of 90% or higher.

<Handling Precautions>

Antimildew Properties

- Antimildew wallcoverings alone cannot completely prevent mold growth.
- For wet substrates such as mortar, direct adhesion of gypsum board (e.g., GL methods), or areas treated with putty or sealers, ensure sufficient drying before installation. In areas requiring strong antimildew measures, adding antimildew agents to the adhesive is recommended for better effectiveness.
- Mold is greatly influenced by indoor environmental conditions. Pay attention to indoor ventilation and humidity control.

Quality Standards

SV Standard (Standard Value: Standard Specifications for Wallcovering Products)

Overview of SV Standard

The SV standard is a voluntary guideline established by the Wallcoverings Association member companies to provide consumers with safe and reliable wallcovering products.

Purpose of SV Standard Development

In recent years, environmental issues such as ozone layer depletion and global warming have worsened.

Additionally, indoor environments are increasingly affected by factors such as airtight housing, high insulation, and poor ventilation, leading to problems with pollutants like formaldehyde and volatile organic compounds (VOCs).

The Wallcoverings Association developed the SV standard to promote wallcovering products that align with creating safe, healthy, and comfortable living environments.

The standard was formulated with consideration of German quality assurance wallcoverings and Japan Industrial Standards (JIS A 6921 for wallcoverings), incorporating additional criteria to achieve higher safety levels.

JIS Standard (JIS A 6921:2014)

This is a national standard established under the Industrial Standardization Act to ensure the quality stability of industrial products in Japan.

No.	Test Items		SV	JIS	
1	Colorfastness (Grade)		4 or higher	4 or higher	
2	Rub Resistance (Grade)	Dry Rub Resistance	4 or higher	4 or higher	
					Vertical
	Wet Rub Resistance		4 or higher	4 or higher	
					Horizontal
3	Opacity (Grade)		3 or higher	3 or higher	
4	Workability		No floating or peeling is allowed.	No floating or peeling is allowed.	
5	Wet Strength (N/1.5cm)	Vertical	5.0 or higher	5.0 or higher	
		Horizontal			
6	Formaldehyde Emission		(mg / L)	0.2 or less	
7	Heavy Metals	Arsenic	(mg / kg)	3 or less	—
		Lead	(mg / kg)	20 or less	—
		Cadmium	(mg / kg)	3 or less	—
		Chromium	(mg / kg)	20 or less	—
		Mercury	(mg / kg)	2 or less	—
8	Vinyl Chloride Monomer		(mg / kg)	0.1 or less	—
9	Residual VOC	TVOC	(μ g / g)	100 or less	—
		TEX Aromatics	(μ g / g)	10 or less	—

※ TEX refers to toluene, xylene, and ethylbenzene.

(Raw Materials)

10	Stabilizers	Stabilizers containing lead, cadmium, or organotin compounds are not used.	—
11	Plasticizers	Non-volatile plasticizers with a boiling point of 300°C or higher are used. However, DBP is not used.	—
12	Blowing Agents	Fluorocarbons are not used.	—
13	Solvents	TEX (Toluene, Xylene, Ethylbenzene) is not used.	—

Maintenance Precautions

Wallcoverings are finishing materials that emphasize design elements such as colors and patterns. Unlike other building materials such as concrete, they are not designed for long-term durability. Regular maintenance is recommended, and it is advised to replace the wallcoverings approximately every 5 to 10 years depending on usage conditions.

Maintenance Precautions

Wallcovering Maintenance

(After construction is completed, please explain the following points to users.)

Wallcoverings gradually accumulate dirt due to indoor dust, condensation, grease, and fingerprints.

Additionally, condensation may lead to mold growth or peeling of the wallcoverings. While usage conditions and the environment may vary, regular maintenance and proper care are essential to maintaining the aesthetic quality of the finish.

General Precautions

1. Ventilation After Move-in

Odors from installation may linger. Ensure adequate ventilation for about a week after moving in.

2. Protection from Direct Sunlight

Prolonged exposure to direct sunlight can cause deterioration and discoloration of the wallcovering due to UV rays. Use curtains or blinds to minimize direct sunlight exposure.

3. Avoid Heat and Hot Air

Ensure that hot air from heaters, such as stoves, does not blow directly onto the wallcovering. Avoid using wallcovering in high-temperature areas, such as near kitchen stoves or under downlights. Heat may cause the wallcovering to deform or discolor.

4. Do not apply adhesive tape.

Do not attach adhesive tape (such as cellophane or duct tape) to the wallcovering. The adhesive from the tape may transfer to the wallcovering, causing discoloration or stains. Peeling off adhesive tape may sometimes damage the wallcovering.

5. Do not allow chemicals or cosmetics to come into contact with the wallcovering.

Avoid spraying chemicals, insecticides, or cosmetics onto the wallcovering. Such substances may cause discoloration of the wallcovering.

6. Avoid causing scratches or damage.

Be careful not to damage the surface of the wallcovering. Once damaged, repairs can be difficult. Take care to avoid bumping furniture or other items against the wallcovering in daily use. Wallcoverings labeled as having a "durable surface" are more resistant to scratches.

7. Do not place furniture directly against the wall surface.

Pigments from furniture paint or veneer may cause discoloration of the wallcovering. Leave some space between the furniture and the wallcovering to prevent condensation and mold.

Stains

There are various types of stains that can affect wallcoverings. The key is to prevent contaminants from attaching and to wipe them off immediately if they do.

For areas prone to staining, wallcoverings labeled "stain-resistant" are recommended. However, please note that certain types of stains may not be completely removable.

● Daily Maintenance

For daily maintenance, use a feather duster or wipe off dust with a cloth or towel.

- If dust remains for an extended period, it may absorb moisture or oil, making it more difficult to remove.
- Cooking fumes and cigarette smoke can discolor wallcoverings in a short period, so always ensure proper ventilation in the room.

● If Stains Occur

1. Water-based stains (e.g., food or condiments)

If a water-based stain occurs, wipe it off immediately with a tightly wrung towel to absorb the stain.

If the stain is difficult to remove, use a diluted neutral detergent.

- Insufficiently wrung water may seep into seams or joints. This can cause stains or peeling, so please be cautious.
- If neutral detergent is used, always wipe the wallcovering surface with clean water to remove any detergent residue. Residual detergent may cause discoloration.
- Do not use organic solvents like thinner, as they may cause discoloration or fading.
- Stains that are left unattended for a long time may become embedded and difficult to remove.

2. Oil-based Stains (e.g., grease or permanent marker)

These stains can become stubborn and may be impossible to remove from standard vinyl wallcoverings.

<For Stain-Resistant Wallcoverings>

The surface film treatment prevents stains from penetrating, making it easier to clean off. Use a damp cloth or a diluted neutral detergent for cleaning. Always finish by wiping with clean water to remove any detergent residue. For small crevices or textured areas, using a toothbrush can be effective.

Disinfectant alcohol can be used for tough stains like permanent marker, but complete removal may not be possible. Organic solvents like thinner may cause discoloration or fading, so test in an inconspicuous area before use. Stains that accumulate over time, such as nicotine stains, are difficult to remove completely.

Handling Precautions

Peeling and Gaps

Over time, partial peeling may occur. Before the peeling spreads, apply stationary glue or water-based wood adhesive to the back of the wallcovering, adjust it into place, and press firmly to repair.

At areas like ceiling edges or inner wall corners, gaps may appear due to building movements. In such cases, fill the gaps using wallcovering caulking agents (synthetic resin fillers). However, when used on the surface, note that due to the nature of caulking, dust and other particles may gradually accumulate, causing dirt over time.

Condensation

In areas prone to water vapor, prolonged high humidity can cause condensation, leading to stains, peeling, and mildew. Minimize the generation of water vapor and ensure proper ventilation and dehumidification indoors.

Mildew not only stains wallcoverings but also poses health risks to residents, so taking precautions is essential.

1.Reduce Sources of Water Vapor

Replace open-flame gas or oil stoves with air conditioners and minimize the use of humidifiers.

2.Ensure Ventilation and Dehumidification

Increase ventilation frequency to expel water vapor generated by heaters and similar devices.

Use exhaust fans to remove water vapor from bathrooms and during cooking. Using dehumidifiers or moisture absorbers can also help eliminate excess water vapor.

3.Improve Airflow

Leave space behind furniture to improve overall air circulation throughout the house.

Mildew

Mildew not only stains wallcoverings but can also cause allergies and asthma to those living in the area, so caution is necessary. Using antimildew wallcoverings alone is not sufficient to prevent mildew. To prevent mildew, ensure proper ventilation, improve airflow, and control humidity levels.

If Mildew Occurs

If mildew appears on the surface, wipe it gently with a damp towel to prevent it from spreading, and then allow the area to dry thoroughly.

For prevention of recurrence, disinfecting with alcohol is effective, but it may cause discoloration or fading of the wallcovering. Test on an inconspicuous area before proceeding. If mildew is widespread, it may require repairs to the underlying surface. It is recommended to consult a professional for assistance.

Handling Precautions

Selection Precautions

1.Fire Resistance

Fire resistance regulations may be established depending on local laws and regulations.

Fire resistance depends on the combination of base materials, fireproof wallcovering materials, and installation methods. Please take note.

2.Usage Environment

Avoid using in high temperatures, high humidity, wet conditions, or outdoors.

3.Pattern Matching Products

Pattern-matching products require more material than plain designs, so please plan accordingly.

For products requiring pattern matching, check the "pattern repeat" information in the sample book. Please note that moisture in the adhesive may cause slight dimensional changes, leading to minor discrepancies between the finished repeat and the sample book display.

4.Functional Wallcoverings

When using functional wallcoverings, please understand their features and precautions beforehand.

For details, refer to the functional description page in this document.

5.Installation Costs

Products with high installation difficulty may incur additional installation costs.

6.Samples, Sample Books, and Photos

Differences between samples, sample books, and actual products may occur due to manufacturing lot variations.

Colors may appear different under varying lighting conditions. Specifications may change without notice due to improvements or other reasons.

Example photos may include composites and might differ slightly from actual products due to printing limitations.

The prices and specifications in this sample book are as of July 2024.

They are subject to change without notice.

7.Pattern Characteristics

Plain designs may also display slight pattern irregularities due to the manufacturing process.

About Downlights

Installation Precautions

● Pay Attention to Substrate Unevenness

Thin, flat, or glossy wallcoverings are especially prone to showing substrate unevenness (e.g., bumps, putty marks, nail holes, foreign objects), so careful preparation for a smooth surface is required. A substrate level equivalent to Grade 1 (for vinyl sheet flooring) is necessary.

● Prevent Folding Creases

After applying adhesive, avoid folding the wallcovering to prevent creases, and keep it upright. It is recommended to complete installation within 60 minutes. Once formed, folding creases may remain even if stretched during installation. Dark-colored or film-based wallcoverings are especially prone to visible creases, requiring extra care.

● Prevent Adhesive Gaps and Streaks

Complete installation within 60 minutes to avoid adhesive pooling, and always use a plastic brush (smoother, etc.) or roller to spread adhesive carefully. Once the adhesive hardens, it cannot be removed, so caution is required. In environments with bad lighting conditions for wallcoverings, use lighting equivalent to permanent fixtures to check for adhesive pooling or streaks.

● Be Cautious with Lighting Placement

Substrate unevenness visibility varies depending on lighting type, placement, and angle. In environments with strong lighting, such as spotlights, it may be impossible to completely eliminate unevenness.

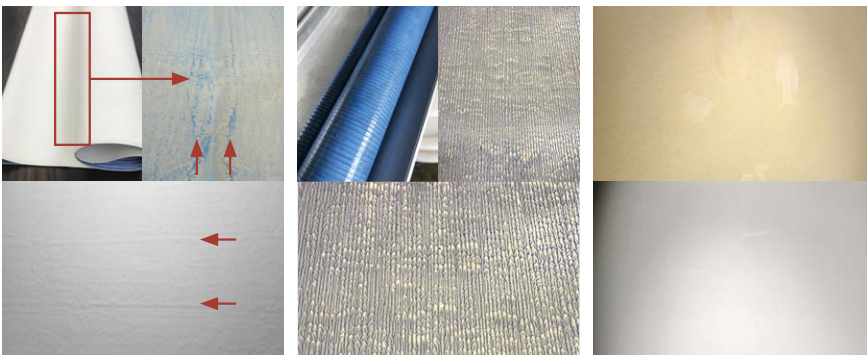
※ More time is required for substrate preparation than usual, which may result in additional installation costs. Please confirm with the installers in advance regarding product characteristics and lighting plans.



Examples of Adhesive Gaps and Streaks

Issues Under Downlight Environments

Unevenness that is unnoticeable under normal lighting may become prominent under downlights.



① Adhesive Pooling Streaks from Adhesive Gaps

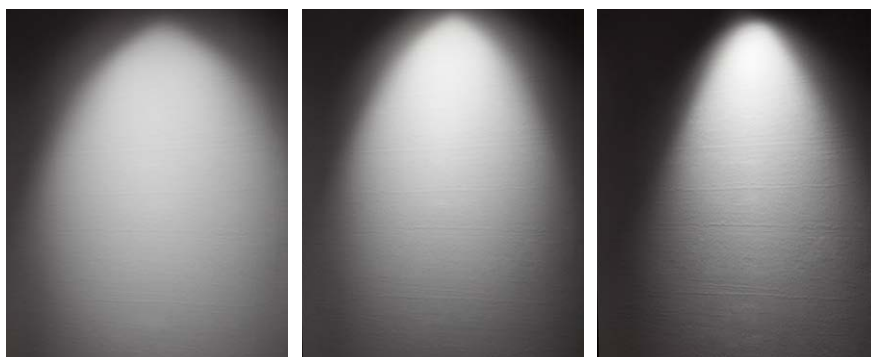
※ The adhesive is colored blue for visibility.

② Roller Streaks from Adhesive Machines

※ The adhesive is colored blue for visibility.

③ Substrate Visibility Due to Decorative Lighting

Unevenness Visibility Depends on Downlight-to-Wall Distance

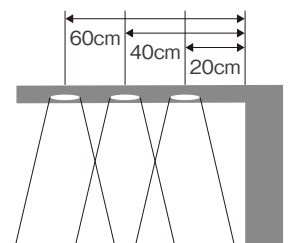


60 cm from the wall

40 cm from the wall

20 cm from the wall

In general, the farther the distance between the downlight and the wall, the less noticeable the unevenness.



Installation Precautions (General Information)

These are general guidelines summarizing the installation procedures for standard vinyl wallcoverings.

For products with higher installation difficulty, detailed product characteristics and installation procedures are listed by caution number starting on page 21. Products with higher installation difficulty may incur additional installation costs. Please confirm the product characteristics and installation environment beforehand when selecting products.

1. Checking the Installation Precaution Section

Products requiring special attention have notes such as **Installation Precautions 1** or **Installation Precautions 3** indicated below the product code in the sample book. Before beginning installation, please review pages 202–203 of the sample book and pages 21–22 of this document.

2. Auxiliary Materials

Auxiliary materials (e.g., putty, sealer, adhesive, bond, antimildew agents) must be specific to wallcovering installation. Using non-specific products may cause seam gaps or blisters. Please refer to the installation guidelines and handling precautions of each auxiliary material manufacturer before use.

3. Checking Product Labels

Check the product code, lot, and quantity indicated on the label before starting installation. Finish each wall surface using products from the same lot.

4. Check Conditions After Installing Approximately Three Strips

Although products undergo thorough inspection, please confirm there are no issues after installing approximately three strips as a precaution. If any obvious defects are found, immediately stop the installation and contact our company. Please note that if work progresses beyond three strips, compensation for installation costs will generally not be accepted.

Substrate Preparation

1. Ensure the Substrate is Dry

Allow sufficient drying time for wet substrates such as mortar, gypsum board applied with gypsum adhesive (GL method), putty, or areas treated with a sealer before installation. Insufficient drying may cause discoloration, peeling, or mildew on the wallcovering.

2. Smooth Substrate Finish

Ensure the substrate is smooth to prevent unevenness after installation. Sink screws and nails completely and apply rustproof treatment to prevent discoloration after installation.

3. Precautions for Mortar, Painted, and Wood Substrates

Use the appropriate sealer for each substrate type for preparation. Direct installation on wood substrates like plywood may cause stains or discoloration over time, so ensure adequate substrate treatment (sealing). Sealers prevent adhesion issues and discoloration.

4. Precautions for Metal Substrates

Always apply rustproof treatment and sealer. Use adhesive mixed with ethylene-vinyl acetate (EVA) glue. Allow for a longer open time, thoroughly remove

air bubbles, and ensure firm adhesion. Failure to do so may cause blisters. When trimming overlaps, use a backing tape to avoid cutting the substrate.

5. Use Putty Matching the Substrate Color

To prevent the substrate color from showing through after installation, use putty that matches the substrate color.

6. Corner Materials

When using corner materials, use perforated plastic types. When attaching, use putty or adhesive tape types. Non-perforated types may cause the adhesive to remain wet, leading to discoloration, peeling, or mildew. Even with perforated types, discoloration, peeling, or mildew may occur depending on the environment or installation conditions. During winter or in cold regions, the adhesive's bond strength may weaken, increasing the likelihood of blisters or lifting. Apply EVA-based glue to the external corner tips of corner materials.

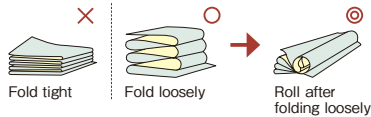
Adhesives

1. Check the Manufacturer's Instructions

Follow the adhesive manufacturer's instructions. Insufficient adhesive application may cause lifting or adhesion failure. Adjust the adhesive with antimildew agents or EVA-based glue as needed for the substrate type and condition.

2. Precautions After Applying Adhesive

Folding After Adhesive Application



Avoid tightly folding or putting pressure on curved areas after adhesive application. This may cause permanent creases. To minimize folding creases and allow stacking, consider rolling the folded wallpaper.

3. Open Time

Allow open time to soften the wallpaper before installation. This facilitates installation and prevents blistering.

4. Formaldehyde Control

Use products marked "F☆☆☆☆" to comply with building standards.

Application

1. Effective Width

Please always use the wallcovering at its effective width. Overlapping sections are not included in the effective width. Using wallcovering beyond the effective width or joining in the middle along the vertical direction may result in color differences. Please avoid such practices.

2. Pattern Matching

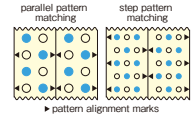
For products requiring pattern matching, align the pattern according to the pattern alignment marks. Products that require pattern matching have "Pattern Repeat" displayed in the sample catalog.

Align the pattern vertically using the "Vertical Repeat" and horizontally using the "Horizontal Repeat," referring to the effective width.

For products where pattern matching is required due to the embossed (textured) surface of the wallcovering, "Emboss Pattern Matching" is indicated. Check the embossed design and align the pattern accordingly before application.

"Step Pattern Matching" differs from general parallel pattern matching; please take extra care when applying.

Please note that some products, such as those requiring emboss pattern matching, may not have pattern alignment marks.



3. Joint Position

The joint position should be applied at the edges. Color differences may occur between the edges and the center. Additionally, applying wallcovering horizontally only in specific sections, such as above or below a window, may cause color differences. Always apply in the same direction.

4. Notes on Gypsum Board Substrates

When performing overlapping cuts, take care not to cut into the surface paper of the gypsum board. Doing so may result in gaps at the seams.

5. Notes on Rolling and Related Procedures

When rolling over the joint areas, avoid pressing too hard or applying excessive force to only one side. This can leave creases, scratches, or cause gloss inconsistencies. For smoothing and air removal, apply gentle pressure and primarily work in a vertical direction. Applying excessive force horizontally may cause seam gaps to appear after drying.

6. Dark-Colored Products

Take extra care, as scratches and adhesive residue are more noticeable. If adhesive remains on the surface, it may appear white and prominent after some time.

Protective Covering

1. Do not use protective tape with strong adhesion.

Avoid using strong masking tape (protective tape) as it may cause issues. Even with low-adhesion tape, do not leave it applied for an extended period. Adhesive may transfer to the wallcovering, leading to discoloration or stains. Additionally, removing the tape may damage the wallcovering.

2. Removal of Adhesive and Stains

Be careful not to let adhesive or stains get on the surface of the wallcovering or surrounding areas such as trims. If adhesive or stains do get on the surface, promptly wipe them off using a cloth dampened with clean water, and finish by wiping dry. Leaving adhesive on the surface can lead to mold or discoloration.

3. Natural Drying After Installation

Allow natural drying after installation until the adhesive has fully stabilized. Ensure proper ventilation by opening windows, but avoid sudden temperature changes caused by air conditioning or heating. Such changes may cause seam gaps or peeling.

4. Ventilation After Moving In

There may be residual odors from the installation process. Ensure adequate ventilation for about a week after moving in. Please explain this to residents after the completion of the work.

Others

Winter or Cold-Climate Installation

As a guideline, avoid installation when temperatures are below 5 °C, as wallcoverings become stiffer and adhesive bonding strength weakens, making installation more difficult. Moisture and air may not escape easily, increasing the risk of issues such as bubbling or curling. To mitigate these problems, warm the room and materials as much as possible and allow a longer open time during installation.

Precautions for Product-Specific Installation

The installation difficulty of wallcoverings varies depending on the product characteristics (thickness, surface durability, glossiness, presence of film) and the installation environment (presence and positioning of downlights or indirect lighting). Especially for thin, non-combustible wallcoverings designed for aesthetics, additional substrate preparation may be required, significantly affecting installation costs. For DECOPOWER, installation caution numbers are listed by product type. Please review the characteristics and installation guidelines of each product carefully before making a selection. Additionally, ensure pre-installation confirmation with all parties involved regarding product characteristics and installation conditions. When installing under environments with downlights or indirect lighting, please also refer to the instructions on page 19.

Installation Precautions 1 Thin Products

- ▶ Products prone to showing the substrate
- Perform thorough putty work to ensure a smooth finish for the substrate.
- Apply adhesive evenly at a rate of 140–160 g/m².

Installation Precautions 2 Thin, Film-Based, and Durable Surface Products

- ▶ Products prone to showing the substrate
- ▶ Products prone to curling
- Perform thorough putty work to create a smooth and durable surface for the substrate.
- Apply adhesive evenly at a rate of 140–160 g/m².
- Use a roller under lighting conditions to smooth out any adhesive pooling or streaks.
- To prevent bubbling, lifting, or peeling, apply extra adhesive at external and internal corners.
- Due to the stiffness and curling tendency of the material, be sure to use an adhesive mixed with ethylene-vinyl acetate (EVA) bonding agents.
- To prevent creases, fold the material loosely during adhesive application and avoid stacking heavy items on top.

Installation Precautions 3 Thin Flat, Film-Based, and Durable Surface Products

- ▶ Products particularly prone to showing the substrate
- ▶ Caution is required under downlights or indirect lighting (refer to page 19)
- ▶ Products prone to curling

- Perform thorough putty work, focusing on creating a smooth and durable surface for the substrate.
- Apply adhesive evenly at a rate of 140–160 g/m².
- To prevent bubbling, lifting, or peeling, apply extra adhesive at external and internal corners.
- Due to the stiffness and curling tendency of the material, always use adhesive mixed with ethylene-vinyl acetate (EVA) bonding agents.
- To prevent creases, fold the material loosely during adhesive application and avoid stacking heavy items on top.
- Avoid applying excess adhesive, and maintain an open time of 15–30 minutes as a guideline. Adjust the open time based on site conditions, as it is affected by temperature and humidity.
- Apply the material within 120 minutes of adhesive application.
- While the adhesive is still soft, ensure no adhesive pooling remain by smoothing with a plastic brush (e.g., smoother) or roller. Adhesive removal becomes difficult once it hardens, so take extra care.
- Always check under lighting conditions equivalent to the final installed environment.
- In low-temperature conditions, wallcovering becomes stiffer, making it harder to smooth out corners. Adjust by extending drying time or warming the material as necessary.

Installation Precautions 4 Thin Flat, Film-Based, Durable Surface, and Pattern Specific Products

- ▶ Products particularly prone to showing the substrate
- ▶ Caution is required under downlights or indirect lighting (refer to page 19)
- ▶ Products prone to curling
- ▶ Due to the characteristics of the pattern, joints may be more noticeable

- Perform thorough putty work, focusing on creating a smooth and durable surface for the substrate.
- Apply adhesive evenly at a rate of 140–160 g/m².
- To prevent bubbling, lifting, or peeling, apply extra adhesive at external and internal corners.
- Due to the stiffness and curling tendency of the material, always use adhesive mixed with ethylene-vinyl acetate (EVA) bonding agents.
- To prevent creases, fold the material loosely during adhesive application and avoid stacking heavy items on top.
- Avoid applying excess adhesive, and maintain an open time of 15–30 minutes as a guideline. Adjust the open time based on site conditions, as it is affected by temperature and humidity.
- Apply the material within 120 minutes of adhesive application.
- While the adhesive is still soft, ensure no adhesive pooling remain by smoothing with a plastic brush (e.g., smoother) or roller. Adhesive removal becomes difficult once it hardens, so take extra care.
- Always check under lighting conditions equivalent to the final installed environment.
- Due to the characteristics of the pattern (horizontal pattern), joint areas may be noticeable.
- In low-temperature conditions, wallcovering becomes stiffer, making it harder to smooth out corners. Adjust by extending drying time or warming the material as necessary.

Installation Precautions 5 Thin, Film-Based, and Pattern-Specific Products (Vertical Pattern)

- ▶ Products prone to showing the substrate
- ▶ Be cautious as creases may easily form when folded

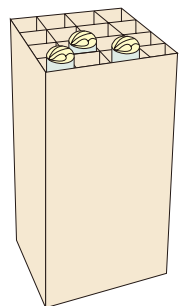
- Perform thorough putty work, focusing on creating a smooth and durable surface for the substrate.
- Apply adhesive evenly at a rate of 140–160 g/m².
- Use a roller under lighting conditions to smooth out any adhesive pooling or streaks.
- To prevent bubbling, lifting, or peeling, apply extra adhesive at external and internal corners.
- Due to the stiffness and curling tendency of the material, always use adhesive mixed with ethylene-vinyl acetate (EVA) bonding agents.
- As the embossing runs vertically on this product, creases may easily form and become noticeable. After applying adhesive, take extra care not to fold the wallcovering tightly or apply pressure on curved sections.

Installation Precautions 6 Thin, Film-Based, Durable Surface, and Pattern-Specific Products

- ▶ Products particularly prone to showing the substrate
- ▶ Special attention is required to avoid adhesive pooling
- ▶ Caution is required under downlights or indirect lighting (refer to page 19)
- ▶ Products prone to curling

- Due to the thin and smooth nature of this product, substrate irregularities are particularly noticeable. Perform thorough putty work, focusing on creating a smooth and durable surface for the substrate.
- Apply adhesive evenly at a rate of approximately 140 g/m².
- To prevent bubbling, lifting, or peeling, apply extra adhesive at external and internal corners.
- Due to the stiffness and curling tendency of the material, always use adhesive mixed with ethylene-vinyl acetate (EVA) bonding agents.
- Given the characteristics of this product, creases may easily form and become noticeable. After applying adhesive, avoid folding the wallcovering or applying pressure on curved sections. Instead, roll it up and store it upright.
- Avoid applying excess adhesive, and maintain an open time of 15–30 minutes as a guideline. Adjust the open time based on site conditions, as it is affected by temperature and humidity.
- Apply the material within 60 minutes of adhesive application.
- While the adhesive is still soft, ensure no adhesive pooling remain by smoothing with a plastic brush (e.g., smoother) or roller. Adhesive removal becomes difficult once it hardens, so take extra care.
- Always check under lighting conditions equivalent to the final installed environment.
- Due to the characteristics of the pattern (a flat pattern without embossing), joint areas may be noticeable.
- In low-temperature conditions, wallcovering becomes stiffer, making it harder to smooth out corners. Adjust by increasing drying time or warming the material as necessary.

When allowing open time, it is recommended to roll the material and store it upright using a dedicated box.



Installation Precautions **Yellow**

This product requires more precautions during installation compared to standard vinyl wallcoverings.

Installation Precautions **Red**

This product requires significantly more precautions during installation compared to standard vinyl wallcoverings. Please discuss the installation environment and related matters with relevant parties in advance.

Installation Precautions **7** High-Gloss Products

- ▶ Products particularly prone to showing the substrate
- ▶ Caution is required under downlights or indirect lighting (refer to page 19)

- Due to the high gloss on the surface of the wallcovering for aesthetic purposes, perform thorough putty work and ensure a smooth and even substrate.
- Apply adhesive evenly at a rate of 140–160 g/m².
- Avoid applying excess adhesive, and maintain an open time of 15–30 minutes as a guideline. Adjust the open time based on site conditions, as it is affected by temperature and humidity.
- Apply the material within 120 minutes of adhesive application.
- While the adhesive is still soft, ensure no adhesive pooling remains by smoothing with a plastic brush (e.g., smoother) or roller. Adhesive removal becomes difficult once it hardens, so take extra care.
- Always check under lighting conditions equivalent to the final installed environment.

Installation Precautions **8** High-Gloss Products with Backing Paper Characteristics

- ▶ Products particularly prone to showing the substrate
- ▶ Special attention is required to avoid adhesive pooling
- ▶ Caution is required under downlights or indirect lighting (refer to page 19)

- Due to the high gloss on the surface of the wallcovering for aesthetic purposes, perform thorough putty work and ensure a smooth and even substrate.
- Apply adhesive evenly at a rate of approximately 140 g/m².
- Because of the characteristics of the backing paper, the adhesive dries quickly. Avoid applying adhesive in advance over a large area.
- Avoid applying excess adhesive, and maintain an open time of 15–30 minutes as a guideline. Adjust the open time based on site conditions, as it is affected by temperature and humidity.
- Apply the material within 60 minutes of adhesive application.
- While the adhesive is still soft, ensure no adhesive pooling remains by smoothing with a plastic brush (e.g., smoother) or roller. Adhesive removal becomes difficult once it hardens, so take extra care.
- Always check under lighting conditions equivalent to the final installed environment.

Installation Precautions **9** High-Gloss Products with Durable Surface

- ▶ Products particularly prone to showing the substrate
- ▶ Special attention is required to avoid adhesive pooling
- ▶ Caution is required under downlights or indirect lighting (refer to page 19)
- ▶ Products prone to curling

- Due to the high gloss on the surface of the wallcovering for aesthetic purposes, perform thorough putty work and ensure a smooth and even substrate.
- Apply adhesive evenly at a rate of approximately 140 g/m².
- To prevent bubbling, lifting, or peeling, apply extra adhesive at external and internal corners.
- Due to the stiffness and curling tendency of the material, always use adhesive mixed with ethylene-vinyl acetate (EVA) bonding agents.
- Avoid applying excess adhesive, and maintain an open time of 15–30 minutes as a guideline. Adjust the open time based on site conditions, as it is affected by temperature and humidity.
- Apply the material within 120 minutes of adhesive application.
- While the adhesive is still soft, ensure no adhesive pooling remains by smoothing with a plastic brush (e.g., smoother) or roller. Adhesive removal becomes difficult once it hardens, so take extra care.
- Always check under lighting conditions equivalent to the final installed environment.

Installation Precautions **10** Thin Flat Products

- ▶ Products particularly prone to showing the substrate
- ▶ Caution is required under downlights or indirect lighting (refer to page 19)

- Perform thorough putty work, focusing on creating a smooth and even substrate.
- Apply adhesive evenly at a rate of 140–160 g/m².
- Avoid applying excess adhesive, and maintain an open time of 15–30 minutes as a guideline. Adjust the open time based on site conditions, as it is affected by temperature and humidity.
- Apply the material within 120 minutes of adhesive application.
- While the adhesive is still soft, ensure no adhesive pooling remains by smoothing with a plastic brush (e.g., smoother) or roller. Adhesive removal becomes difficult once it hardens, so take extra care.
- Always check under lighting conditions equivalent to the final installed environment.

Installation Precautions **11** Thin Flat and Pattern-Specific Products

- ▶ Products particularly prone to showing the substrate
- ▶ Caution is required under downlights or indirect lighting (refer to page 19)
- ▶ Due to the characteristics of the pattern, joints may be more noticeable

- Perform thorough putty work, focusing on creating a smooth and even substrate.
- Apply adhesive evenly at a rate of 140–160 g/m².
- Avoid applying excess adhesive, and maintain an open time of 15–30 minutes as a guideline. Adjust the open time based on site conditions, as it is affected by temperature and humidity.
- Apply the material within 120 minutes of adhesive application.
- While the adhesive is still soft, ensure no adhesive pooling remains by smoothing with a plastic brush (e.g., smoother) or roller. Adhesive removal becomes difficult once it hardens, so take extra care.
- Always check under lighting conditions equivalent to the final installed environment.
- Due to the characteristics of the pattern (horizontal pattern), joint areas may be noticeable.

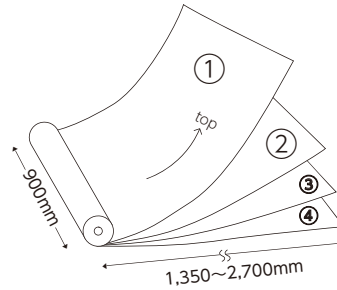
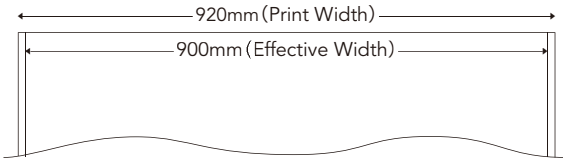
Installation Precaution List

Installation Precautions 1 Substrate Unevenness	151 items	8009 8017 8021 8027 8029 8030 8046 8068 8069 8070 8071 8072 8073 8074 8075 8076 8077 8078 8079 8080 8081 8088 8089 8090 8091 8092 8093 8094 8095 8096 8097 8098 8099 8101 8102 8113 8115 8116 8117 8118 8119 8120 8121 8128 8131 8132 8145 8147 8149 8150 8151 8152 8153 8154 8155 8156 8160 8161 8162 8163 8164 8165 8167 8168 8251 8252 8253 8254 8255 8256 8257 8258 8259 8260 8261 8262 8263 8264 8265 8266 8267 8268 8269 8270 8277 8278 8279 8280 8289 8290 8291 8292 8294 8295 8301 8303 8304 8305 8306 8307 8308 8309 8310 8311 8312 8313 8314 8315 8316 8317 8318 8319 8498 8499 8500 8501 8502 8503 8504 8505 8506 8507 8508 8509 8510 8511 8512 8513 8514 8515 8516 8517 8518 8519 8520 8521 8522 8523 8524 8525 8526 8527 8528 8529 8530 8531 8532 8533 8534 8535 8536
Installation Precautions 2 Substrate Unevenness, Folding Creases	82 items	8004 8005 8007 8008 8010 8011 8012 8013 8014 8015 8018 8019 8020 8028 8049 8100 8124 8125 8127 8129 8133 8134 8410 8411 8412 8413 8414 8415 8416 8417 8418 8419 8420 8421 8422 8423 8424 8425 8426 8427 8428 8429 8430 8431 8432 8433 8434 8439 8440 8441 8442 8443 8444 8445 8446 8447 8448 8449 8450 8454 8455 8456 8469 8470 8471 8472 8473 8474 8475 8476 8477 8478 8479 8480 8481 8482 8483 8484 8485 8486 8487 8488
Installation Precautions 3 Substrate Unevenness, Folding Creases, Adhesive Pooling	82 items	8001 8002 8003 8006 8016 8022 8041 8042 8050 8051 8052 8053 8054 8061 8062 8067 8109 8110 8114 8122 8123 8126 8169 8320 8321 8322 8323 8324 8325 8326 8327 8328 8329 8330 8331 8332 8333 8334 8335 8336 8337 8338 8339 8340 8341 8342 8343 8344 8345 8346 8347 8348 8349 8350 8351 8352 8353 8354 8355 8356 8357 8358 8359 8360 8361 8362 8363 8364 8365 8366 8367 8368 8369 8370 8371 8372 8409 8435 8436 8437 8438 8489
Installation Precautions 4 Substrate Unevenness, Folding Creases, Adhesive Pooling, Noticeable Joints	12 items	8281 8282 8283 8284 8285 8286 8403 8404 8405 8406 8407 8408
Installation Precautions 5 Substrate Unevenness, Folding Creases	23 items	8451 8452 8453 8457 8458 8459 8460 8461 8462 8463 8464 8465 8466 8467 8468 8490 8491 8492 8493 8494 8495 8496 8497
Installation Precautions 6 Substrate Unevenness, Folding Creases, Adhesive Pooling, Noticeable Joints	30 items	8373 8374 8375 8376 8377 8378 8379 8380 8381 8382 8383 8384 8385 8386 8387 8388 8389 8390 8391 8392 8393 8394 8395 8396 8397 8398 8399 8400 8401 8402
Installation Precautions 7 Substrate Unevenness, Adhesive Pooling	23 items	8025 8026 8084 8085 8086 8087 8135 8136 8137 8138 8139 8140 8141 8142 8143 8144 8146 8271 8272 8273 8274 8275 8276
Installation Precautions 8 Substrate Unevenness, Adhesive Pooling, Adhesive Drying	2 items	8296 8297
Installation Precautions 9 Substrate Unevenness, Adhesive Pooling	1 items	8148
Installation Precautions 10 Substrate Unevenness, Adhesive Pooling	35 items	8023 8024 8043 8044 8045 8047 8055 8056 8057 8058 8059 8060 8063 8064 8065 8066 8082 8083 8103 8104 8105 8106 8107 8108 8111 8112 8130 8166 8287 8288 8293 8298 8299 8300 8302
Installation Precautions 11 Substrate Unevenness, Adhesive Pooling, Noticeable Joints	6 items	8157 8158 8159 8248 8249 8250

DIGITAL PRINT WALL (Ink Jet Wallcovering)

Product Specifications

- DIGITAL PRINT WALL has an effective width of 900 mm and a print width of 920 mm.
- There is a 1 cm overprint area on all sides, and the output image overlaps by 1 cm on both the left and right edges at the joint sections.
- Align the patterns in the overlapping areas and use overlapping cuts for installation.



This product is cut into individual widths and packed by rolling downward from the right side, starting with Roll ①.

Base Material (Specifically for Inkjet Wallcoverings)

- Vinyl Wallcovering - Stone Texture



Installation Precautions 10 Antibacterial and Antimildew Properties

<Installation Precautions>

DIGITAL PRINT WALL

- Before installation, check the "layout diagram" included with the printed product to ensure there are no discrepancies or deficiencies in the installation area.
- Verify the vertical and horizontal alignment of the installation surface beforehand. Ensure that the first sheet is installed perfectly vertical.
- Due to the characteristics of the wallcovering, stretching may occur after adhesive application. The more sheets you install, the greater the impact. Start installation from areas that are key points in the design, such as character images, to ensure proper alignment.
- When performing overlapping cuts, use joint tape or similar to prevent damage to the substrate.
- Handle the printed surface carefully to avoid scratches.
- Avoid rubbing the printed surface forcefully as the print may come off.
- Do not mix materials from different rolls, as this may result in color discrepancies.

Key Points for Installation

Reference Material: "Excellent Wallpaper, Excellent Techniques" published by the Wallcovering Installation Association

Substrate Preparation

●Smoothing the Substrate

The following products may require extra effort for substrate preparation to ensure a smooth surface, which may result in additional installation costs:

- Thin products
- Durable surface products
- Shallow embossing products
- Noncombustible certified products
- Glossy products

If issues remain in the substrate from previous processes that cannot be corrected during installation, report them to the site manager and proceed with installation only after the issues have been resolved.

●Substrate Adjustment

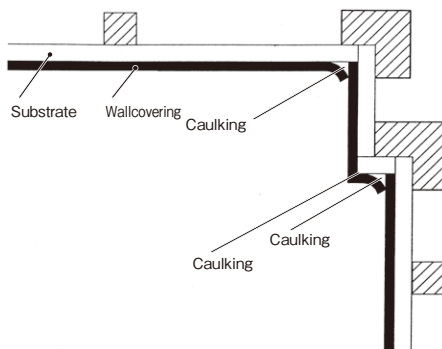
Ensure that concrete or mortar substrates are fully dried (moisture content of 8–11% or less as measured by a moisture meter). For gypsum board with GL construction methods, ensure that substrate is fully dried (moisture content of 11% or less as measured by a moisture meter). Concrete or mortar surfaces become alkaline upon contact with moisture. Additionally, during winter, the surface may become powdery. Applying a sealer appropriately is essential in such conditions.

Caulking Treatment

●Applications of Caulking Agents

- ① Fill gaps in the substrate to seal them.
- ② Insert behind the wallpaper to reinforce adhesion at the junction between the ceiling and wall.
- ③ Insert behind the wallpaper to reinforce adhesion at junctions around door frames and window frames.
- ④ Insert behind the wallpaper to reinforce adhesion at corner joints in internal corners.

Caulking agents are acrylic-based resins originally designed to fill gaps. They maintain adhesiveness, allowing them to withstand substrate movement. However, if used on the surface of the wallpaper, be aware that dust and other particles may adhere, potentially causing discoloration.



Extra Adhesive

Extra adhesive is used in cases where the applied adhesive alone is insufficient or where there are concerns about adhesion. It is applied to reinforce key areas and ensure they are securely pressed into place.

●When Extra Adhesive is Necessary

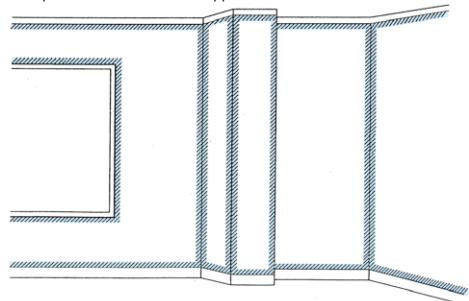
- ① When the substrate contains resin components, such as Shina plywood, that hinder adhesion, or when surfaces like printed plywood are difficult to bond with starch-based adhesives alone, additional steps may be necessary. In such cases, sanding the surface, applying a sealer, and using extra adhesive are effective measures.
- ② For functional wallcoverings, such as those with durable surfaces or stain resistance, or for thin and rigid materials, extra adhesive may be required during installation at joints, internal corners, and external corners.

●Adhesives for Extra Application

Depending on the site conditions (substrate and wallcovering), use one of the following synthetic resin emulsions, either in their original form or appropriately mixed with starch-based adhesives:

- ① Ethylene-vinyl acetate resin emulsion
- ② Vinyl acetate resin emulsion
- ③ Acrylic resin emulsion

Examples of Extra Adhesive Application



Folding Creases

●Issues with Folding Creases

Wallcoverings prone to folding creases include functional wallcoverings with features like stain resistance or durable surfaces, as well as thin materials or those with shallow embossing. These require careful handling. Folding tightly or stacking too many layers increases the likelihood of creases forming.

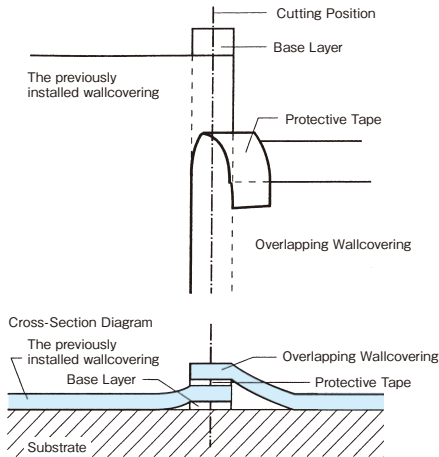
●How to Prevent Folding Creases

- ① Limit the number of layers
Restrict the number of stacked layers to 2–3, and fold the material loosely.
- ② Roll the wallcovering
After applying adhesive, do not fold the wallcovering. Instead, attach cut tape (protective plastic tape) to the edges, align the top and bottom with the tape, and place the material gently. Avoid stacking.
- ③ Place the wallcovering in plastic bags or containers
After adhesive application, put the wallcovering in plastic bags or containers to slow down the drying process and ensure proper open time.

Joint Methods

Joints are generally best achieved using overlapping cuts (double cutting). Below are key points regarding joint methods.

● Base Tape and Cut Tape



● Selecting a Cutter

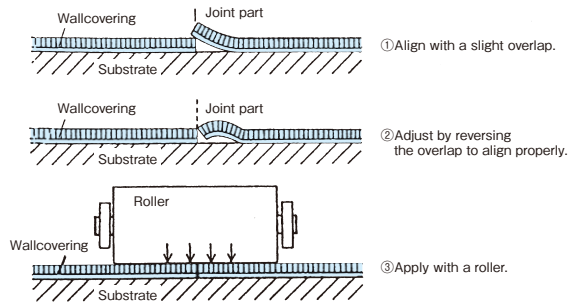
For thin wallcoverings, use a cutter with a thin blade. Be careful not to cut into the surface paper of the gypsum board, as this can lead to visible gaps at the seams.

● Choosing a Ruler

When performing overlapping cuts, use a ruler specifically designed for double cutting. Securing the ruler properly during cutting and ensuring a straight cutting line are essential for achieving a clean, professional finish. Choosing the right ruler is key.

● Preventing Gaps at Joints

As shown in the diagram, cut the edges of the wallcovering slightly longer than needed so that they overlap slightly and press them together with a roller.



● Rolling application and smoothing.

It is important to press the joint areas firmly with a roller or similar tool, but applying excessive pressure may cause issues such as gloss marks.

Various types of rollers for wallcovering installation are available on the market, so choose the appropriate type based on the situation.

- PC Roller Hard and suitable for applying strong pressure.
- Rubber Roller ... Ideal for gentle pressing or when there is a risk of damaging foam layers.
- Urethane roller ... Best for soft and delicate pressing.

Precautions for Seam Alignment

To prevent color or gloss differences between the left and right sides of the wallcovering, conduct checks during the installation process or after installing 2-3 strips. Perform visual checks from a slight distance, and if any issues arise, confirm that the seam alignment is correct and contact our sales representative.

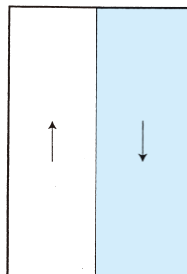


Diagram
Do not install with the top and bottom inverted. (Incorrect orientation).

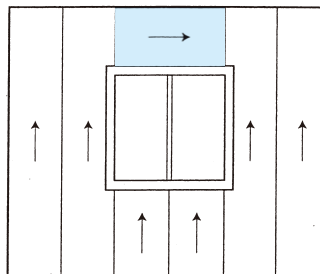


Diagram
Do not align strips in different directions, such as installing some sections horizontally.

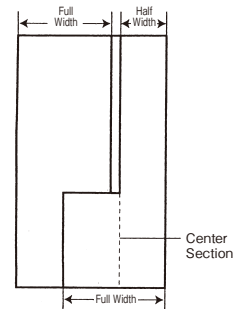


Diagram
To ensure proper seam alignment, make sure the edges of the wallcovering strips meet at their ends. Avoid aligning seams between the edges and the center sections.

Product Code Reference Table

DECOPOWER 2024-2027 ⇒ POWER1000 2021-2024

DECOPOWER 2024-2027	POWER1000 2021-2024	DECOPOWER SELECT 2024-2027	Non-combustible certified 1000 2021-2024	DECOPOWER 2024-2027	POWER1000 2021-2024	DECOPOWER SELECT 2024-2027	Non-combustible certified 1000 2021-2024
WVP8001				WVP8051			
WVP8002				WVP8052			
WVP8003				WVP8053	WVP4127		WF7229
WVP8004				WVP8054	WVP4128		WF7230
WVP8005				WVP8055	WVP4154		
WVP8006				WVP8056	WVP4140		
WVP8007				WVP8057	WVP4139		WF7245
WVP8008				WVP8058	WVP4143		
WVP8009				WVP8059	WVP4146		WF7247
WVP8010				WVP8060	WVP4147		WF7236
WVP8011				WVP8061	WVP4133		WF7227
WVP8012				WVP8062	WVP4134		WF7228
WVP8013				WVP8063	WVP4137		WF7248
WVP8014				WVP8064	WVP4138		
WVP8015				WVP8065	WVP4135		WF7249
WVP8016	WVP4168			WVP8066	WVP4136		WF7250
WVP8017	WVP4167			WVP8067	WVP4177		
WVP8018	WVP4163			WVP8068	WVP4178		
WVP8019	WVP4164			WVP8069			
WVP8020	WVP4165			WVP8070			
WVP8021	WVP4162			WVP8071	WVP4060		
WVP8022	WVP4171			WVP8072	WVP4061		
WVP8023	WVP4157			WVP8073			
WVP8024	WVP4158			WVP8074			
WVP8025	WVP4159			WVP8075	WVP4062		
WVP8026	WVP4160			WVP8076			
WVP8027	WVP4172			WVP8077			
WVP8028	WVP4173			WVP8078			
WVP8029	WVP4175			WVP8079			
WVP8030	WVP4176			WVP8080			
WVP8031		WVF1083		WVP8081			
WVP8032		WVF1084		WVP8082	WVP4046		
WVP8033		WVF1085		WVP8083	WVP4047		
WVP8034		WVF1086		WVP8084			
WVP8035		WVF1087		WVP8085			
WVP8036		WVF1088		WVP8086	WVP4049		
WVP8037		WVF1080		WVP8087	WVP4050		
WVP8038		WVF1082		WVP8088	WVP4053		
WVP8039	WVP4131	WVF1089	WF7234	WVP8089	WVP4054		
WVP8040	WVP4121	WVF1081	WF7240	WVP8090	WVP4055		
WVP8041	WVP4122		WF7242	WVP8091			
WVP8042	WVP4123		WF7241	WVP8092			
WVP8043	WVP4124		WF7243	WVP8093	WVP4052		
WVP8044	WVP4125		WF7244	WVP8094			
WVP8045	WVP4119			WVP8095			
WVP8046	WVP4120			WVP8096			
WVP8047	WVP4151			WVP8097			
WVP8048		WVF1079		WVP8098	WVP4058		
WVP8049	WVP4152			WVP8099	WVP4078		
WVP8050				WVP8100	WVP4068		

DECOPOWER 2024-2027 ⇒ POWER1000 2021-2024

DECOPOWER 2024-2027	POWER1000 2021-2024	DECOPOWER SELECT 2024-2027	Non-combustible certified 1000 2021-2024	DECOPOWER 2024-2027	POWER1000 2021-2024	DECOPOWER SELECT 2024-2027	Non-combustible certified 1000 2021-2024
WVP8101	WVP4076			WVP8151	WVP4001		
WVP8102	WVP4077			WVP8152	WVP4002		
WVP8103				WVP8153	WVP4003		
WVP8104				WVP8154	WVP4040		
WVP8105				WVP8155	WVP4041		
WVP8106				WVP8156	WVP4042		
WVP8107	WVP4072			WVP8157			
WVP8108	WVP4073			WVP8158	WVP4037		
WVP8109	WVP4083			WVP8159	WVP4038		
WVP8110	WVP4084			WVP8160	WVP4024		
WVP8111	WVP4085			WVP8161	WVP4025		
WVP8112	WVP4086			WVP8162	WVP4020		
WVP8113				WVP8163	WVP4021		
WVP8114	WVP4099			WVP8164	WVP4022		
WVP8115	WVP4101			WVP8165	WVP4023		
WVP8116				WVP8166	WVP4004		
WVP8117				WVP8167	WVP4005		
WVP8118				WVP8168			
WVP8119				WVP8169	WVP4045		
WVP8120				WVP8170	WVP4182	WVF1015	WF7075
WVP8121				WVP8171		WVF1017	
WVP8122				WVP8172		WVF1016	
WVP8123				WVP8173		WVF1018	
WVP8124				WVP8174		WVF1019	
WVP8125				WVP8175		WVF1020	
WVP8126	WVP4104			WVP8176	WVP4181	WVF1024	WF7051
WVP8127	WVP4105			WVP8177	WVP4179	WVF1046	WF7055
WVP8128	WVP4106			WVP8178	WVP4180	WVF1045	WF7049
WVP8129	WVP4107			WVP8179		WVF1023	
WVP8130	WVP4115			WVP8180	WVP4184	WVF1025	WF7053
WVP8131	WVP4116			WVP8181	WVP4191	WVF1026	WF7054
WVP8132	WVP4111			WVP8182	WVP4188	WVF1050	WF7058
WVP8133				WVP8183	WVP4187	WVF1049	WF7059
WVP8134	WVP4112			WVP8184	WVP4192	WVF1022	WF7078
WVP8135				WVP8185	WVP4193	WVF1021	WF7076
WVP8136				WVP8186	WVP4186	WVF1048	WF7057
WVP8137				WVP8187	WVP4185	WVF1047	WF7056
WVP8138				WVP8188		WVF1038	
WVP8139				WVP8189		WVF1039	
WVP8140				WVP8190		WVF1040	
WVP8141				WVP8191	WVP4205	WVF1011	WF7070
WVP8142				WVP8192		WVF1041	
WVP8143	WVP4027			WVP8193		WVF1042	
WVP8144				WVP8194		WVF1043	
WVP8145	WVP4026			WVP8195		WVF1044	
WVP8146	WVP4012			WVP8196	WVP4209	WVF1076	WF7063
WVP8147	WVP4015			WVP8197	WVP4210	WVF1077	WF7064
WVP8148	WVP4014			WVP8198	WVP4212	WVF1078	WF7066
WVP8149	WVP4030			WVP8199		WVF1056	
WVP8150	WVP4031			WVP8200		WVF1057	

DECOPOWER 2024-2027 ⇒ POWER1000 2021-2024

DECOPOWER 2024-2027	POWER1000 2021-2024	DECOPOWER SELECT 2024-2027	Non-combustible certified 1000 2021-2024	DECOPOWER 2024-2027	POWER1000 2021-2024	DECOPOWER SELECT 2024-2027	Non-combustible certified 1000 2021-2024
WVP8201	WVP4198	WVF1051	WF7079	WVP8251			
WVP8202		WVF1053		WVP8252			
WVP8203	WVP4200	WVF1055	WF7081	WVP8253			
WVP8204		WVF1052		WVP8254			
WVP8205	WVP4199	WVF1054	WF7080	WVP8255	WVP4304		
WVP8206	WVP4228	WVF1012	WF7046	WVP8256	WVP4305		
WVP8207	WVP4229	WVF1013	WF7047	WVP8257	WVP4306		
WVP8208	WVP4230	WVF1014	WF7048	WVP8258			
WVP8209	WVP4226	WVF1001	WF7044	WVP8259			
WVP8210	WVP4227	WVF1003	WF7045	WVP8260			
WVP8211		WVF1002		WVP8261			
WVP8212		WVF1004		WVP8262	WVP4320		WF7088
WVP8213		WVF1005		WVP8263			
WVP8214		WVF1009		WVP8264			
WVP8215		WVF1008		WVP8265	WVP4325		WF7093
WVP8216		WVF1007		WVP8266	WVP4321		WF7089
WVP8217		WVF1006		WVP8267	WVP4322		WF7090
WVP8218		WVF1010		WVP8268	WVP4323		WF7091
WVP8219	WVP4215	WVF1027	WF7039	WVP8269	WVP4324		WF7092
WVP8220	WVP4216	WVF1028	WF7040	WVP8270			
WVP8221	WVP4217	WVF1029	WF7041	WVP8271			
WVP8222	WVP4222	WVF1036	WF7037	WVP8272			
WVP8223	WVP4223	WVF1037	WF7038	WVP8273			
WVP8224	WVP4218	WVF1030	WF7033	WVP8274			
WVP8225	WVP4219	WVF1031	WF7034	WVP8275			
WVP8226	WVP4220	WVF1032	WF7035	WVP8276			
WVP8227	WVP4221	WVF1033	WF7036	WVP8277			
WVP8228	WVP4224	WVF1034	WF7042	WVP8278			
WVP8229	WVP4225	WVF1035	WF7043	WVP8279			
WVP8230		WVF1068		WVP8280			
WVP8231		WVF1069		WVP8281	WVP4307		
WVP8232		WVF1070		WVP8282			
WVP8233		WVF1074		WVP8283			
WVP8234		WVF1071		WVP8284			
WVP8235		WVF1073		WVP8285			
WVP8236		WVF1072		WVP8286			
WVP8237		WVF1075		WVP8287	WVP4290		
WVP8238		WVF1062		WVP8288	WVP4291		
WVP8239		WVF1058		WVP8289	WVP4292		WF7082
WVP8240		WVF1059		WVP8290	WVP4293		WF7083
WVP8241		WVF1060		WVP8291	WVP4297		
WVP8242		WVF1061		WVP8292	WVP4296		
WVP8243		WVF1067		WVP8293	WVP4276		
WVP8244		WVF1063		WVP8294	WVP4265		
WVP8245		WVF1064		WVP8295	WVP4266		
WVP8246		WVF1065		WVP8296			
WVP8247		WVF1066		WVP8297			
WVP8248	WVP4300		WF7084	WVP8298			
WVP8249	WVP4301		WF7085	WVP8299			
WVP8250	WVP4302		WF7086	WVP8300			

DECOPOWER 2024-2027 ⇒ POWER1000 2021-2024

DECOPOWER 2024-2027	POWER1000 2021-2024	DECOPOWER SELECT 2024-2027	Non-combustible certified 1000 2021-2024	DECOPOWER 2024-2027	POWER1000 2021-2024	DECOPOWER SELECT 2024-2027	Non-combustible certified 1000 2021-2024
WVP8301	WVP4277			WVP8351	WVP4478		WF7171
WVP8302	WVP4267			WVP8352			
WVP8303	WVP4263			WVP8353			
WVP8304				WVP8354			
WVP8305	WVP4264			WVP8355			
WVP8306				WVP8356			
WVP8307				WVP8357			
WVP8308				WVP8358			
WVP8309				WVP8359			
WVP8310				WVP8360			
WVP8311				WVP8361	WVP4468		WF7218
WVP8312	WVP4282			WVP8362	WVP4469		WF7220
WVP8313	WVP4283			WVP8363	WVP4470		WF7219
WVP8314	WVP4284			WVP8364	WVP4471		WF7222
WVP8315	WVP4285			WVP8365	WVP4472		WF7223
WVP8316	WVP4286			WVP8366	WVP4473		WF7224
WVP8317	WVP4287			WVP8367	WVP4474		WF7221
WVP8318	WVP4288			WVP8368	WVP4475		WF7225
WVP8319	WVP4289			WVP8369	WVP4476		WF7226
WVP8320				WVP8370	WVP4447		WF7184
WVP8321				WVP8371	WVP4448		WF7183
WVP8322				WVP8372	WVP4449		
WVP8323				WVP8373	WVP4396		WF7185
WVP8324				WVP8374	WVP4397		WF7186
WVP8325				WVP8375	WVP4398		WF7187
WVP8326				WVP8376	WVP4399		WF7188
WVP8327				WVP8377	WVP4400		WF7189
WVP8328	WVP4462		WF7215	WVP8378	WVP4401		WF7190
WVP8329	WVP4463		WF7216	WVP8379	WVP4402		WF7191
WVP8330	WVP4464		WF7217	WVP8380	WVP4403		WF7192
WVP8331	WVP4453		WF7161	WVP8381	WVP4404		WF7193
WVP8332				WVP8382	WVP4405		WF7194
WVP8333				WVP8383	WVP4406		WF7195
WVP8334	WVP4455		WF7162	WVP8384	WVP4407		WF7196
WVP8335				WVP8385	WVP4408		WF7198
WVP8336	WVP4454		WF7158	WVP8386	WVP4409		WF7202
WVP8337	WVP4458		WF7159	WVP8387	WVP4410		WF7203
WVP8338	WVP4457		WF7164	WVP8388	WVP4411		WF7199
WVP8339				WVP8389	WVP4412		WF7200
WVP8340	WVP4459		WF7160	WVP8390	WVP4413		WF7201
WVP8341	WVP4460		WF7163	WVP8391	WVP4414		WF7197
WVP8342	WVP4461		WF7166	WVP8392	WVP4415		WF7204
WVP8343	WVP4456		WF7165	WVP8393	WVP4416		WF7208
WVP8344	WVP4465		WF7167	WVP8394	WVP4417		WF7205
WVP8345	WVP4466		WF7168	WVP8395	WVP4418		WF7209
WVP8346	WVP4467		WF7169	WVP8396	WVP4419		WF7206
WVP8347				WVP8397	WVP4420		WF7207
WVP8348	WVP4450			WVP8398	WVP4421		WF7210
WVP8349	WVP4451			WVP8399	WVP4422		WF7211
WVP8350	WVP4477		WF7170	WVP8400	WVP4423		WF7212

DECOPOWER 2024-2027 ⇒ POWER1000 2021-2024

DECOPOWER 2024-2027	POWER1000 2021-2024	DECOPOWER SELECT 2024-2027	Non-combustible certified 1000 2021-2024	DECOPOWER 2024-2027	POWER1000 2021-2024	DECOPOWER SELECT 2024-2027	Non-combustible certified 1000 2021-2024
WVP8401	WVP4424		WF7213	WVP8451	WVP4336		WF7127
WVP8402	WVP4425		WF7214	WVP8452	WVP4337		WF7128
WVP8403	WVP4440			WVP8453	WVP4338		
WVP8404	WVP4441			WVP8454	WVP4361		WF7123
WVP8405	WVP4442			WVP8455	WVP4363		WF7125
WVP8406	WVP4443			WVP8456	WVP4364		WF7126
WVP8407	WVP4444			WVP8457	WVP4365		WF7129
WVP8408	WVP4445			WVP8458	WVP4366		WF7130
WVP8409	WVP4446		WF7141	WVP8459	WVP4367		WF7131
WVP8410	WVP4394		WF7147	WVP8460	WVP4368		WF7133
WVP8411				WVP8461	WVP4369		WF7132
WVP8412	WVP4395		WF7148	WVP8462	WVP4370		WF7134
WVP8413				WVP8463	WVP4371		WF7136
WVP8414	WVP4426		WF7142	WVP8464	WVP4372		WF7138
WVP8415	WVP4427		WF7143	WVP8465	WVP4373		WF7137
WVP8416	WVP4429		WF7144	WVP8466	WVP4374		WF7139
WVP8417	WVP4428		WF7145	WVP8467	WVP4375		WF7135
WVP8418	WVP4430		WF7146	WVP8468	WVP4376		WF7140
WVP8419	WVP4431		WF7149	WVP8469	WVP4356		
WVP8420	WVP4432		WF7150	WVP8470	WVP4377		WF7172
WVP8421	WVP4434		WF7152	WVP8471	WVP4378		
WVP8422	WVP4433		WF7151	WVP8472	WVP4379		WF7173
WVP8423	WVP4436		WF7153	WVP8473	WVP4380		
WVP8424				WVP8474	WVP4381		WF7174
WVP8425	WVP4437		WF7154	WVP8475	WVP4382		WF7175
WVP8426	WVP4435		WF7156	WVP8476	WVP4383		WF7176
WVP8427	WVP4438		WF7155	WVP8477	WVP4388		WF7177
WVP8428	WVP4439		WF7157	WVP8478			
WVP8429				WVP8479			
WVP8430				WVP8480	WVP4393		WF7182
WVP8431				WVP8481	WVP4391		
WVP8432				WVP8482	WVP4392		WF7181
WVP8433				WVP8483	WVP4479		WF7098
WVP8434				WVP8484	WVP4480		WF7099
WVP8435	WVP4339		WF7108	WVP8485	WVP4484		
WVP8436	WVP4340		WF7109	WVP8486	WVP4481		WF7095
WVP8437	WVP4342		WF7110	WVP8487	WVP4482		WF7096
WVP8438	WVP4341			WVP8488	WVP4483		WF7097
WVP8439	WVP4344		WF7111	WVP8489	WVP4486		WF7094
WVP8440	WVP4345		WF7112	WVP8490	WVP4487		WF7100
WVP8441	WVP4347		WF7113	WVP8491	WVP4490		WF7101
WVP8442	WVP4346			WVP8492	WVP4489		WF7104
WVP8443				WVP8493	WVP4488		WF7102
WVP8444	WVP4358		WF7120	WVP8494	WVP4491		WF7103
WVP8445	WVP4359		WF7121	WVP8495	WVP4493		WF7105
WVP8446				WVP8496	WVP4492		WF7106
WVP8447	WVP4360		WF7122	WVP8497	WVP4494		WF7107
WVP8448	WVP4349		WF7117	WVP8498	WVP4248		WF7018
WVP8449	WVP4350		WF7118	WVP8499	WVP4249		WF7019
WVP8450	WVP4351		WF7119	WVP8500	WVP4250		WF7020

DECOPOWER 2024-2027 ⇒ POWER1000 2021-2024

DECOPOWER 2024-2027	POWER1000 2021-2024	DECOPOWER SELECT 2024-2027	Non-combustible certified 1000 2021-2024
WVP8501	WVP4251		WF7021
WVP8502	WVP4252		WF7022
WVP8503	WVP4253		WF7023
WVP8504	WVP4254		WF7024
WVP8505	WVP4255		WF7025
WVP8506	WVP4256		WF7026
WVP8507	WVP4257		WF7027
WVP8508	WVP4258		WF7028
WVP8509	WVP4259		WF7029
WVP8510	WVP4260		WF7032
WVP8511	WVP4261		WF7031
WVP8512	WVP4262		WF7030
WVP8513	WVP4240		WF7010
WVP8514	WVP4241		WF7011
WVP8515	WVP4242		WF7012
WVP8516			
WVP8517			
WVP8518			
WVP8519	WVP4231		WF7001
WVP8520	WVP4232		WF7002
WVP8521	WVP4233		WF7004
WVP8522	WVP4234		WF7003
WVP8523	WVP4236		WF7006
WVP8524	WVP4235		WF7005
WVP8525	WVP4237		WF7007
WVP8526	WVP4238		WF7008
WVP8527	WVP4239		WF7009
WVP8528	WVP4329		
WVP8529	WVP4330		
WVP8530			
WVP8531	WVP4331		
WVP8532	WVP4334		
WVP8533			
WVP8534			
WVP8535			
WVP8536	WVP4333		

Product Code Reference Table

POWER1000 2021-2024 ⇒ DECOPOWER 2024-2027

POWER1000 2021-2024	DECOPOWER 2024-2027	住まいの壁紙 100選～2026	DECOPOWER SELECT 2024-2027	Non-combustible certified 1000 2021-2024	POWER1000 2021-2024	DECOPOWER 2024-2027	住まいの壁紙 100選～2026	DECOPOWER SELECT 2024-2027	Non-combustible certified 1000 2021-2024
WVP4001	WVP8151				WVP4051				
WVP4002	WVP8152				WVP4052	WVP8093			
WVP4003	WVP8153				WVP4053	WVP8088			
WVP4004	WVP8166				WVP4054	WVP8089			
WVP4005	WVP8167				WVP4055	WVP8090			
WVP4006					WVP4056				
WVP4007					WVP4057				
WVP4008					WVP4058	WVP8098			
WVP4009					WVP4059				
WVP4010					WVP4060	WVP8071			
WVP4011					WVP4061	WVP8072			
WVP4012	WVP8146				WVP4062	WVP8075			
WVP4013					WVP4063				
WVP4014	WVP8148				WVP4064				
WVP4015	WVP8147				WVP4065				
WVP4016					WVP4066				
WVP4017					WVP4067				
WVP4018					WVP4068	WVP8100			
WVP4019					WVP4069				
WVP4020	WVP8162				WVP4070				
WVP4021	WVP8163				WVP4071				
WVP4022	WVP8164				WVP4072	WVP8107			
WVP4023	WVP8165				WVP4073	WVP8108			
WVP4024	WVP8160				WVP4074				
WVP4025	WVP8161				WVP4075				
WVP4026	WVP8145				WVP4076	WVP8101			
WVP4027	WVP8143				WVP4077	WVP8102			
WVP4028					WVP4078	WVP8099			
WVP4029					WVP4079				
WVP4030	WVP8149				WVP4080				
WVP4031	WVP8150				WVP4081				
WVP4032					WVP4082				
WVP4033					WVP4083	WVP8109			
WVP4034					WVP4084	WVP8110			
WVP4035					WVP4085	WVP8111			
WVP4036					WVP4086	WVP8112			
WVP4037	WVP8158				WVP4087				
WVP4038	WVP8159				WVP4088				
WVP4039					WVP4089				
WVP4040	WVP8154				WVP4090				
WVP4041	WVP8155				WVP4091				
WVP4042	WVP8156				WVP4092				
WVP4043					WVP4093				
WVP4044					WVP4094				
WVP4045	WVP8169				WVP4095				
WVP4046	WVP8082				WVP4096				
WVP4047	WVP8083				WVP4097				
WVP4048					WVP4098				
WVP4049	WVP8086				WVP4099	WVP8114			
WVP4050	WVP8087				WVP4100				

POWER1000 2021-2024 ⇒ DECOPOWER 2024-2027

POWER1000 2021-2024	DECOPOWER 2024-2027	住まいの壁紙 100選~2026	DECOPOWER SELECT 2024-2027	Non-combustible certified 1000 2021-2024	POWER1000 2021-2024	DECOPOWER 2024-2027	住まいの壁紙 100選~2026	DECOPOWER SELECT 2024-2027	Non-combustible certified 1000 2021-2024
WVP4101	WVP8115				WVP4151	WVP8047			
WVP4102					WVP4152	WVP8049			
WVP4103					WVP4153				
WVP4104	WVP8126				WVP4154	WVP8055			
WVP4105	WVP8127				WVP4155				
WVP4106	WVP8128				WVP4156				
WVP4107	WVP8129				WVP4157	WVP8023			
WVP4108					WVP4158	WVP8024			
WVP4109					WVP4159	WVP8025			
WVP4110					WVP4160	WVP8026			
WVP4111	WVP8132				WVP4161				
WVP4112	WVP8134				WVP4162	WVP8021			
WVP4113					WVP4163	WVP8018			
WVP4114					WVP4164	WVP8019			
WVP4115	WVP8130				WVP4165	WVP8020			
WVP4116	WVP8131				WVP4166				
WVP4117					WVP4167	WVP8017			
WVP4118					WVP4168	WVP8016			
WVP4119	WVP8045				WVP4169				
WVP4120	WVP8046				WVP4170				
WVP4121	WVP8040		WVF1081	WF7240	WVP4171	WVP8022			
WVP4122	WVP8041			WF7242	WVP4172	WVP8027			
WVP4123	WVP8042			WF7241	WVP4173	WVP8028			
WVP4124	WVP8043			WF7243	WVP4174				
WVP4125	WVP8044			WF7244	WVP4175	WVP8029			
WVP4126				WF7231	WVP4176	WVP8030			
WVP4127	WVP8053			WF7229	WVP4177	WVP8067			
WVP4128	WVP8054			WF7230	WVP4178	WVP8068			
WVP4129				WF7233	WVP4179	WVP8177	WVF1046	WF7055	
WVP4130				WF7232	WVP4180	WVP8178	WVF1045	WF7049	
WVP4131	WVP8039		WVF1089	WF7234	WVP4181	WVP8176	WVF1024	WF7051	
WVP4132				WF7235	WVP4182	WVP8170	WVF1015	WF7075	
WVP4133	WVP8061			WF7227	WVP4183			WF7050	
WVP4134	WVP8062			WF7228	WVP4184	WVP8180	WVF1025	WF7053	
WVP4135	WVP8065			WF7249	WVP4185	WVP8187	WVF1047	WF7056	
WVP4136	WVP8066			WF7250	WVP4186	WVP8186	WVF1048	WF7057	
WVP4137	WVP8063			WF7248	WVP4187	WVP8183	WVF1049	WF7059	
WVP4138	WVP8064				WVP4188	WVP8182	WVF1050	WF7058	
WVP4139	WVP8057			WF7245	WVP4189			WF7077	
WVP4140	WVP8056				WVP4190			WF7052	
WVP4141					WVP4191	WVP8181	WVF1026	WF7054	
WVP4142					WVP4192	WVP8184	WVF1022	WF7078	
WVP4143	WVP8058				WVP4193	WVP8185	WVF1021	WF7076	
WVP4144					WVP4194			WF7060	
WVP4145				WF7246	WVP4195				
WVP4146	WVP8059			WF7247	WVP4196			WF7061	
WVP4147	WVP8060			WF7236	WVP4197			WF7062	
WVP4148				WF7237	WVP4198	WVP8201	WVF1051	WF7079	
WVP4149				WF7238	WVP4199	WVP8205	WVF1054	WF7080	
WVP4150				WF7239	WVP4200	WVP8203	WVF1055	WF7081	

POWER1000 2021-2024 ⇒ DECOPOWER 2024-2027

POWER1000 2021-2024	DECOPOWER 2024-2027	住まいの壁紙 100選~2026	DECOPOWER SELECT 2024-2027	Non-combustible certified 1000 2021-2024	POWER1000 2021-2024	DECOPOWER 2024-2027	住まいの壁紙 100選~2026	DECOPOWER SELECT 2024-2027	Non-combustible certified 1000 2021-2024
WVP4201				WF7072	WVP4251	WVP8501			WF7021
WVP4202					WVP4252	WVP8502			WF7022
WVP4203				WF7073	WVP4253	WVP8503			WF7023
WVP4204				WF7074	WVP4254	WVP8504			WF7024
WVP4205	WVP8191		WVF1011	WF7070	WVP4255	WVP8505			WF7025
WVP4206				WF7071	WVP4256	WVP8506			WF7026
WVP4207				WF7068	WVP4257	WVP8507			WF7027
WVP4208				WF7069	WVP4258	WVP8508			WF7028
WVP4209	WVP8196		WVF1076	WF7063	WVP4259	WVP8509			WF7029
WVP4210	WVP8197		WVF1077	WF7064	WVP4260	WVP8510			WF7032
WVP4211				WF7065	WVP4261	WVP8511			WF7031
WVP4212	WVP8198		WVF1078	WF7066	WVP4262	WVP8512			WF7030
WVP4213				WF7067	WVP4263	WVP8303			
WVP4214					WVP4264	WVP8305			
WVP4215	WVP8219		WVF1027	WF7039	WVP4265	WVP8294			
WVP4216	WVP8220		WVF1028	WF7040	WVP4266	WVP8295			
WVP4217	WVP8221		WVF1029	WF7041	WVP4267	WVP8302			
WVP4218	WVP8224		WVF1030	WF7033	WVP4268				
WVP4219	WVP8225		WVF1031	WF7034	WVP4269				
WVP4220	WVP8226		WVF1032	WF7035	WVP4270				
WVP4221	WVP8227		WVF1033	WF7036	WVP4271				
WVP4222	WVP8222		WVF1036	WF7037	WVP4272				
WVP4223	WVP8223		WVF1037	WF7038	WVP4273				
WVP4224	WVP8228		WVF1034	WF7042	WVP4274				
WVP4225	WVP8229		WVF1035	WF7043	WVP4275				
WVP4226	WVP8209		WVF1001	WF7044	WVP4276	WVP8293			
WVP4227	WVP8210		WVF1003	WF7045	WVP4277	WVP8301			
WVP4228	WVP8206		WVF1012	WF7046	WVP4278				
WVP4229	WVP8207		WVF1013	WF7047	WVP4279				
WVP4230	WVP8208		WVF1014	WF7048	WVP4280				
WVP4231	WVP8519			WF7001	WVP4281				
WVP4232	WVP8520			WF7002	WVP4282	WVP8312			
WVP4233	WVP8521			WF7004	WVP4283	WVP8313			
WVP4234	WVP8522			WF7003	WVP4284	WVP8314			
WVP4235	WVP8524			WF7005	WVP4285	WVP8315			
WVP4236	WVP8523			WF7006	WVP4286	WVP8316			
WVP4237	WVP8525			WF7007	WVP4287	WVP8317			
WVP4238	WVP8526			WF7008	WVP4288	WVP8318			
WVP4239	WVP8527			WF7009	WVP4289	WVP8319			
WVP4240	WVP8513			WF7010	WVP4290	WVP8287			
WVP4241	WVP8514			WF7011	WVP4291	WVP8288			
WVP4242	WVP8515			WF7012	WVP4292	WVP8289			WF7082
WVP4243				WF7013	WVP4293	WVP8290			WF7083
WVP4244				WF7014	WVP4294				
WVP4245				WF7015	WVP4295				
WVP4246				WF7016	WVP4296	WVP8292			
WVP4247				WF7017	WVP4297	WVP8291			
WVP4248	WVP8498			WF7018	WVP4298				
WVP4249	WVP8499			WF7019	WVP4299				
WVP4250	WVP8500			WF7020	WVP4300	WVP8248			WF7084

POWER1000 2021-2024 ⇒ DECOPOWER 2024-2027

POWER1000 2021-2024	DECOPOWER 2024-2027	住まいの壁紙 100選~2026	DECOPOWER SELECT 2024-2027	Non-combustible certified 1000 2021-2024	POWER1000 2021-2024	DECOPOWER 2024-2027	住まいの壁紙 100選~2026	DECOPOWER SELECT 2024-2027	Non-combustible certified 1000 2021-2024
WVP4301	WVP8249			WF7085	WVP4351	WVP8450			WF7119
WVP4302	WVP8250			WF7086	WVP4352				WF7114
WVP4303				WF7087	WVP4353				WF7115
WVP4304	WVP8255				WVP4354				WF7116
WVP4305	WVP8256				WVP4355				WF7180
WVP4306	WVP8257				WVP4356	WVP8469			
WVP4307	WVP8281				WVP4357				WF7179
WVP4308					WVP4358	WVP8444			WF7120
WVP4309					WVP4359	WVP8445			WF7121
WVP4310					WVP4360	WVP8447			WF7122
WVP4311					WVP4361	WVP8454			WF7123
WVP4312					WVP4362				WF7124
WVP4313					WVP4363	WVP8455			WF7125
WVP4314					WVP4364	WVP8456			WF7126
WVP4315					WVP4365	WVP8457			WF7129
WVP4316					WVP4366	WVP8458			WF7130
WVP4317					WVP4367	WVP8459			WF7131
WVP4318					WVP4368	WVP8460			WF7133
WVP4319					WVP4369	WVP8461			WF7132
WVP4320	WVP8262			WF7088	WVP4370	WVP8462			WF7134
WVP4321	WVP8266			WF7089	WVP4371	WVP8463			WF7136
WVP4322	WVP8267			WF7090	WVP4372	WVP8464			WF7138
WVP4323	WVP8268			WF7091	WVP4373	WVP8465			WF7137
WVP4324	WVP8269			WF7092	WVP4374	WVP8466			WF7139
WVP4325	WVP8265			WF7093	WVP4375	WVP8467			WF7135
WVP4326					WVP4376	WVP8468			WF7140
WVP4327					WVP4377	WVP8470			WF7172
WVP4328					WVP4378	WVP8471			
WVP4329	WVP8528				WVP4379	WVP8472			WF7173
WVP4330	WVP8529				WVP4380	WVP8473			
WVP4331	WVP8531				WVP4381	WVP8474			WF7174
WVP4332					WVP4382	WVP8475			WF7175
WVP4333	WVP8536				WVP4383	WVP8476			WF7176
WVP4334	WVP8532				WVP4384				
WVP4335					WVP4385				
WVP4336	WVP8451			WF7127	WVP4386				
WVP4337	WVP8452			WF7128	WVP4387				
WVP4338	WVP8453				WVP4388	WVP8477			WF7177
WVP4339	WVP8435			WF7108	WVP4389				WF7178
WVP4340	WVP8436			WF7109	WVP4390				
WVP4341	WVP8438				WVP4391	WVP8481			
WVP4342	WVP8437			WF7110	WVP4392	WVP8482			WF7181
WVP4343					WVP4393	WVP8480			WF7182
WVP4344	WVP8439			WF7111	WVP4394	WVP8410			WF7147
WVP4345	WVP8440			WF7112	WVP4395	WVP8412			WF7148
WVP4346	WVP8442				WVP4396	WVP8373			WF7185
WVP4347	WVP8441			WF7113	WVP4397	WVP8374			WF7186
WVP4348					WVP4398	WVP8375			WF7187
WVP4349	WVP8448			WF7117	WVP4399	WVP8376			WF7188
WVP4350	WVP8449			WF7118	WVP4400	WVP8377			WF7189

POWER1000 2021-2024 ⇒ DECOPOWER 2024-2027

POWER1000 2021-2024	DECOPOWER 2024-2027	住まいの壁紙 100選~2026	DECOPOWER SELECT 2024-2027	Non-combustible certified 1000 2021-2024	POWER1000 2021-2024	DECOPOWER 2024-2027	住まいの壁紙 100選~2026	DECOPOWER SELECT 2024-2027	Non-combustible certified 1000 2021-2024
WVP4401	WVP8378			WF7190	WVP4451	WVP8349			
WVP4402	WVP8379			WF7191	WVP4452				
WVP4403	WVP8380			WF7192	WVP4453	WVP8331			WF7161
WVP4404	WVP8381			WF7193	WVP4454	WVP8336			WF7158
WVP4405	WVP8382			WF7194	WVP4455	WVP8334			WF7162
WVP4406	WVP8383			WF7195	WVP4456	WVP8343			WF7165
WVP4407	WVP8384			WF7196	WVP4457	WVP8338			WF7164
WVP4408	WVP8385			WF7198	WVP4458	WVP8337			WF7159
WVP4409	WVP8386			WF7202	WVP4459	WVP8340			WF7160
WVP4410	WVP8387			WF7203	WVP4460	WVP8341			WF7163
WVP4411	WVP8388			WF7199	WVP4461	WVP8342			WF7166
WVP4412	WVP8389			WF7200	WVP4462	WVP8328			WF7215
WVP4413	WVP8390			WF7201	WVP4463	WVP8329			WF7216
WVP4414	WVP8391			WF7197	WVP4464	WVP8330			WF7217
WVP4415	WVP8392			WF7204	WVP4465	WVP8344			WF7167
WVP4416	WVP8393			WF7208	WVP4466	WVP8345			WF7168
WVP4417	WVP8394			WF7205	WVP4467	WVP8346			WF7169
WVP4418	WVP8395			WF7209	WVP4468	WVP8361			WF7218
WVP4419	WVP8396			WF7206	WVP4469	WVP8362			WF7220
WVP4420	WVP8397			WF7207	WVP4470	WVP8363			WF7219
WVP4421	WVP8398			WF7210	WVP4471	WVP8364			WF7222
WVP4422	WVP8399			WF7211	WVP4472	WVP8365			WF7223
WVP4423	WVP8400			WF7212	WVP4473	WVP8366			WF7224
WVP4424	WVP8401			WF7213	WVP4474	WVP8367			WF7221
WVP4425	WVP8402			WF7214	WVP4475	WVP8368			WF7225
WVP4426	WVP8414			WF7142	WVP4476	WVP8369			WF7226
WVP4427	WVP8415			WF7143	WVP4477	WVP8350			WF7170
WVP4428	WVP8417			WF7145	WVP4478	WVP8351			WF7171
WVP4429	WVP8416			WF7144	WVP4479	WVP8483			WF7098
WVP4430	WVP8418			WF7146	WVP4480	WVP8484			WF7099
WVP4431	WVP8419			WF7149	WVP4481	WVP8486			WF7095
WVP4432	WVP8420			WF7150	WVP4482	WVP8487			WF7096
WVP4433	WVP8422			WF7151	WVP4483	WVP8488			WF7097
WVP4434	WVP8421			WF7152	WVP4484	WVP8485			
WVP4435	WVP8426			WF7156	WVP4485				
WVP4436	WVP8423			WF7153	WVP4486	WVP8489			WF7094
WVP4437	WVP8425			WF7154	WVP4487	WVP8490			WF7100
WVP4438	WVP8427			WF7155	WVP4488	WVP8493			WF7102
WVP4439	WVP8428			WF7157	WVP4489	WVP8492			WF7104
WVP4440	WVP8403				WVP4490	WVP8491			WF7101
WVP4441	WVP8404				WVP4491	WVP8494			WF7103
WVP4442	WVP8405				WVP4492	WVP8496			WF7106
WVP4443	WVP8406				WVP4493	WVP8495			WF7105
WVP4444	WVP8407				WVP4494	WVP8497			WF7107
WVP4445	WVP8408				WVP4501		WVC837		
WVP4446	WVP8409			WF7141	WVP4502		WVC838		
WVP4447	WVP8370			WF7184	WVP4503		WVC839		
WVP4448	WVP8371			WF7183	WVP4504		WVC833		
WVP4449	WVP8372				WVP4505		WVC834		
WVP4450	WVP8348				WVP4506		WVC835		

POWER1000 2021-2024 ⇒ DECOPOWER 2024-2027

POWER1000 2021-2024	DECOPOWER 2024-2027	住まいの壁紙 100選~2026	DECOPOWER SELECT 2024-2027	Non-combustible certified 1000 2021-2024	POWER1000 2021-2024	DECOPOWER 2024-2027	住まいの壁紙 100選~2026	DECOPOWER SELECT 2024-2027	Non-combustible certified 1000 2021-2024
WVP4507					WVP4557		WVC843		
WVP4508		WVC836			WVP4558		WVC891		
WVP4509					WVP4559				
WVP4510		WVC840			WVP4560				
WVP4511		WVC841			WVP4561		WVC890		
WVP4512		WVC842			WVP4562				
WVP4513					WVP4563				
WVP4514					WVP4564				
WVP4515					WVP4565		WVC859		
WVP4516		WVC825			WVP4566		WVC860		
WVP4517		WVC830			WVP4567		WVC861		
WVP4518		WVC829			WVP4568				
WVP4519		WVC826			WVP4569		WVC862		
WVP4520					WVP4570				
WVP4521					WVP4571		WVC863		
WVP4522					WVP4572				
WVP4523					WVP4573				
WVP4524		WVC807			WVP4574				
WVP4525		WVC808			WVP4575				
WVP4526					WVP4576				
WVP4527					WVP4577				
WVP4528					WVP4578				
WVP4529		WVC818			WVP4579		WVC892		
WVP4530		WVC831			WVP4580				
WVP4531					WVP4581				
WVP4532					WVP4582		WVC883		
WVP4533					WVP4583				
WVP4534					WVP4584		WVC885		
WVP4535					WVP4585				
WVP4536					WVP4586		WVC882		
WVP4537					WVP4587				
WVP4538		WVC858			WVP4588				
WVP4539					WVP4589				
WVP4540					WVP4590		WVC865		
WVP4541					WVP4591		WVC866		
WVP4542		WVC850			WVP4592				
WVP4543		WVC851			WVP4593		WVC868		
WVP4544		WVC852			WVP4594		WVC869		
WVP4545					WVP4595				
WVP4546					WVP4596		WVC880		
WVP4547					WVP4597		WVC881		
WVP4548					WVP4598				
WVP4549					WVP4599				
WVP4550					WVP4600				
WVP4551					WVP4601		WVC876		
WVP4552		WVC853			WVP4602				
WVP4553					WVP4603		WVC872		
WVP4554		WVC857			WVP4604		WVC870		
WVP4555		WVC856			WVP4605		WVC871		
WVP4556		WVC824			WVP4606				

Product Code Reference Table

DECOPOWER SELECT 2024-2027 ⇒ DECOPOWER 2024-2027

DECOPOWER SELECT 2024-2027	DECOPOWER 2024-2027	POWER1000 2021-2024	Non-combustible certified 1000 2021-2024	DECOPOWER SELECT 2024-2027	DECOPOWER 2024-2027	POWER1000 2021-2024	Non-combustible certified 1000 2021-2024
WVF1001	WVP8209	WVP4226	WF7044	WVF1051	WVP8201	WVP4198	WF7079
WVF1002	WVP8211			WVF1052	WVP8204		
WVF1003	WVP8210	WVP4227	WF7045	WVF1053	WVP8202		
WVF1004	WVP8212			WVF1054	WVP8205	WVP4199	WF7080
WVF1005	WVP8213			WVF1055	WVP8203	WVP4200	WF7081
WVF1006	WVP8217			WVF1056	WVP8199		
WVF1007	WVP8216			WVF1057	WVP8200		
WVF1008	WVP8215			WVF1058	WVP8239		
WVF1009	WVP8214			WVF1059	WVP8240		
WVF1010	WVP8218			WVF1060	WVP8241		
WVF1011	WVP8191	WVP4205	WF7070	WVF1061	WVP8242		
WVF1012	WVP8206	WVP4228	WF7046	WVF1062	WVP8238		
WVF1013	WVP8207	WVP4229	WF7047	WVF1063	WVP8244		
WVF1014	WVP8208	WVP4230	WF7048	WVF1064	WVP8245		
WVF1015	WVP8170	WVP4182	WF7075	WVF1065	WVP8246		
WVF1016	WVP8172			WVF1066	WVP8247		
WVF1017	WVP8171			WVF1067	WVP8243		
WVF1018	WVP8173			WVF1068	WVP8230		
WVF1019	WVP8174			WVF1069	WVP8231		
WVF1020	WVP8175			WVF1070	WVP8232		
WVF1021	WVP8185	WVP4193	WF7076	WVF1071	WVP8234		
WVF1022	WVP8184	WVP4192	WF7078	WVF1072	WVP8236		
WVF1023	WVP8179			WVF1073	WVP8235		
WVF1024	WVP8176	WVP4181	WF7051	WVF1074	WVP8233		
WVF1025	WVP8180	WVP4184	WF7053	WVF1075	WVP8237		
WVF1026	WVP8181	WVP4191	WF7054	WVF1076	WVP8196	WVP4209	WF7063
WVF1027	WVP8219	WVP4215	WF7039	WVF1077	WVP8197	WVP4210	WF7064
WVF1028	WVP8220	WVP4216	WF7040	WVF1078	WVP8198	WVP4212	WF7066
WVF1029	WVP8221	WVP4217	WF7041	WVF1079	WVP8048		
WVF1030	WVP8224	WVP4218	WF7033	WVF1080	WVP8037		
WVF1031	WVP8225	WVP4219	WF7034	WVF1081	WVP8040	WVP4121	WF7240
WVF1032	WVP8226	WVP4220	WF7035	WVF1082	WVP8038		
WVF1033	WVP8227	WVP4221	WF7036	WVF1083	WVP8031		
WVF1034	WVP8228	WVP4224	WF7042	WVF1084	WVP8032		
WVF1035	WVP8229	WVP4225	WF7043	WVF1085	WVP8033		
WVF1036	WVP8222	WVP4222	WF7037	WVF1086	WVP8034		
WVF1037	WVP8223	WVP4223	WF7038	WVF1087	WVP8035		
WVF1038	WVP8188			WVF1088	WVP8036		
WVF1039	WVP8189			WVF1089	WVP8039	WVP4131	WF7234
WVF1040	WVP8190						
WVF1041	WVP8192						
WVF1042	WVP8193						
WVF1043	WVP8194						
WVF1044	WVP8195						
WVF1045	WVP8178	WVP4180	WF7049				
WVF1046	WVP8177	WVP4179	WF7055				
WVF1047	WVP8187	WVP4185	WF7056				
WVF1048	WVP8186	WVP4186	WF7057				
WVF1049	WVP8183	WVP4187	WF7059				
WVF1050	WVP8182	WVP4188	WF7058				

Product Code Reference Table

Non-combustible certified 1000 2021-2024 ⇒ DECOPOWER 2024-2027

Non-combustible certified 1000 2021-2024	DECOPOWER 2024-2027	POWER1000 2021-2024	DECOPOWER SELECT 2024-2027	Non-combustible certified 1000 2021-2024	DECOPOWER 2024-2027	POWER1000 2021-2024	DECOPOWER SELECT 2024-2027
WF7001	WVP8519	WVP4231		WF7051	WVP8176	WVP4181	WVF1024
WF7002	WVP8520	WVP4232		WF7052		WVP4190	
WF7003	WVP8522	WVP4234		WF7053	WVP8180	WVP4184	WVF1025
WF7004	WVP8521	WVP4233		WF7054	WVP8181	WVP4191	WVF1026
WF7005	WVP8524	WVP4235		WF7055	WVP8177	WVP4179	WVF1046
WF7006	WVP8523	WVP4236		WF7056	WVP8187	WVP4185	WVF1047
WF7007	WVP8525	WVP4237		WF7057	WVP8186	WVP4186	WVF1048
WF7008	WVP8526	WVP4238		WF7058	WVP8182	WVP4188	WVF1050
WF7009	WVP8527	WVP4239		WF7059	WVP8183	WVP4187	WVF1049
WF7010	WVP8513	WVP4240		WF7060		WVP4194	
WF7011	WVP8514	WVP4241		WF7061		WVP4196	
WF7012	WVP8515	WVP4242		WF7062		WVP4197	
WF7013		WVP4243		WF7063	WVP8196	WVP4209	WVF1076
WF7014		WVP4244		WF7064	WVP8197	WVP4210	WVF1077
WF7015		WVP4245		WF7065		WVP4211	
WF7016		WVP4246		WF7066	WVP8198	WVP4212	WVF1078
WF7017		WVP4247		WF7067		WVP4213	
WF7018	WVP8498	WVP4248		WF7068		WVP4207	
WF7019	WVP8499	WVP4249		WF7069		WVP4208	
WF7020	WVP8500	WVP4250		WF7070	WVP8191	WVP4205	WVF1011
WF7021	WVP8501	WVP4251		WF7071		WVP4206	
WF7022	WVP8502	WVP4252		WF7072		WVP4201	
WF7023	WVP8503	WVP4253		WF7073		WVP4203	
WF7024	WVP8504	WVP4254		WF7074		WVP4204	
WF7025	WVP8505	WVP4255		WF7075	WVP8170	WVP4182	WVF1015
WF7026	WVP8506	WVP4256		WF7076	WVP8185	WVP4193	WVF1021
WF7027	WVP8507	WVP4257		WF7077		WVP4189	
WF7028	WVP8508	WVP4258		WF7078	WVP8184	WVP4192	WVF1022
WF7029	WVP8509	WVP4259		WF7079	WVP8201	WVP4198	WVF1051
WF7030	WVP8512	WVP4262		WF7080	WVP8205	WVP4199	WVF1054
WF7031	WVP8511	WVP4261		WF7081	WVP8203	WVP4200	WVF1055
WF7032	WVP8510	WVP4260		WF7082	WVP8289	WVP4292	
WF7033	WVP8224	WVP4218	WVF1030	WF7083	WVP8290	WVP4293	
WF7034	WVP8225	WVP4219	WVF1031	WF7084	WVP8248	WVP4300	
WF7035	WVP8226	WVP4220	WVF1032	WF7085	WVP8249	WVP4301	
WF7036	WVP8227	WVP4221	WVF1033	WF7086	WVP8250	WVP4302	
WF7037	WVP8222	WVP4222	WVF1036	WF7087		WVP4303	
WF7038	WVP8223	WVP4223	WVF1037	WF7088	WVP8262	WVP4320	
WF7039	WVP8219	WVP4215	WVF1027	WF7089	WVP8266	WVP4321	
WF7040	WVP8220	WVP4216	WVF1028	WF7090	WVP8267	WVP4322	
WF7041	WVP8221	WVP4217	WVF1029	WF7091	WVP8268	WVP4323	
WF7042	WVP8228	WVP4224	WVF1034	WF7092	WVP8269	WVP4324	
WF7043	WVP8229	WVP4225	WVF1035	WF7093	WVP8265	WVP4325	
WF7044	WVP8209	WVP4226	WVF1001	WF7094	WVP8489	WVP4486	
WF7045	WVP8210	WVP4227	WVF1003	WF7095	WVP8486	WVP4481	
WF7046	WVP8206	WVP4228	WVF1012	WF7096	WVP8487	WVP4482	
WF7047	WVP8207	WVP4229	WVF1013	WF7097	WVP8488	WVP4483	
WF7048	WVP8208	WVP4230	WVF1014	WF7098	WVP8483	WVP4479	
WF7049	WVP8178	WVP4180	WVF1045	WF7099	WVP8484	WVP4480	
WF7050		WVP4183		WF7100	WVP8490	WVP4487	

Non-combustible certified 1000 2021-2024 ⇒ DECOPOWER 2024-2027

Non-combustible certified 1000 2021-2024	DECOPOWER 2024-2027	POWER1000 2021-2024	DECOPOWER SELECT 2024-2027	Non-combustible certified 1000 2021-2024	DECOPOWER 2024-2027	POWER1000 2021-2024	DECOPOWER SELECT 2024-2027
WF7101	WVP8491	WVP4490		WF7151	WVP8422	WVP4433	
WF7102	WVP8493	WVP4488		WF7152	WVP8421	WVP4434	
WF7103	WVP8494	WVP4491		WF7153	WVP8423	WVP4436	
WF7104	WVP8492	WVP4489		WF7154	WVP8425	WVP4437	
WF7105	WVP8495	WVP4493		WF7155	WVP8427	WVP4438	
WF7106	WVP8496	WVP4492		WF7156	WVP8426	WVP4435	
WF7107	WVP8497	WVP4494		WF7157	WVP8428	WVP4439	
WF7108	WVP8435	WVP4339		WF7158	WVP8336	WVP4454	
WF7109	WVP8436	WVP4340		WF7159	WVP8337	WVP4458	
WF7110	WVP8437	WVP4342		WF7160	WVP8340	WVP4459	
WF7111	WVP8439	WVP4344		WF7161	WVP8331	WVP4453	
WF7112	WVP8440	WVP4345		WF7162	WVP8334	WVP4455	
WF7113	WVP8441	WVP4347		WF7163	WVP8341	WVP4460	
WF7114		WVP4352		WF7164	WVP8338	WVP4457	
WF7115		WVP4353		WF7165	WVP8343	WVP4456	
WF7116		WVP4354		WF7166	WVP8342	WVP4461	
WF7117	WVP8448	WVP4349		WF7167	WVP8344	WVP4465	
WF7118	WVP8449	WVP4350		WF7168	WVP8345	WVP4466	
WF7119	WVP8450	WVP4351		WF7169	WVP8346	WVP4467	
WF7120	WVP8444	WVP4358		WF7170	WVP8350	WVP4477	
WF7121	WVP8445	WVP4359		WF7171	WVP8351	WVP4478	
WF7122	WVP8447	WVP4360		WF7172	WVP8470	WVP4377	
WF7123	WVP8454	WVP4361		WF7173	WVP8472	WVP4379	
WF7124		WVP4362		WF7174	WVP8474	WVP4381	
WF7125	WVP8455	WVP4363		WF7175	WVP8475	WVP4382	
WF7126	WVP8456	WVP4364		WF7176	WVP8476	WVP4383	
WF7127	WVP8451	WVP4336		WF7177	WVP8477	WVP4388	
WF7128	WVP8452	WVP4337		WF7178		WVP4389	
WF7129	WVP8457	WVP4365		WF7179		WVP4357	
WF7130	WVP8458	WVP4366		WF7180		WVP4355	
WF7131	WVP8459	WVP4367		WF7181	WVP8482	WVP4392	
WF7132	WVP8461	WVP4369		WF7182	WVP8480	WVP4393	
WF7133	WVP8460	WVP4368		WF7183	WVP8371	WVP4448	
WF7134	WVP8462	WVP4370		WF7184	WVP8370	WVP4447	
WF7135	WVP8467	WVP4375		WF7185	WVP8373	WVP4396	
WF7136	WVP8463	WVP4371		WF7186	WVP8374	WVP4397	
WF7137	WVP8465	WVP4373		WF7187	WVP8375	WVP4398	
WF7138	WVP8464	WVP4372		WF7188	WVP8376	WVP4399	
WF7139	WVP8466	WVP4374		WF7189	WVP8377	WVP4400	
WF7140	WVP8468	WVP4376		WF7190	WVP8378	WVP4401	
WF7141	WVP8409	WVP4446		WF7191	WVP8379	WVP4402	
WF7142	WVP8414	WVP4426		WF7192	WVP8380	WVP4403	
WF7143	WVP8415	WVP4427		WF7193	WVP8381	WVP4404	
WF7144	WVP8416	WVP4429		WF7194	WVP8382	WVP4405	
WF7145	WVP8417	WVP4428		WF7195	WVP8383	WVP4406	
WF7146	WVP8418	WVP4430		WF7196	WVP8384	WVP4407	
WF7147	WVP8410	WVP4394		WF7197	WVP8391	WVP4414	
WF7148	WVP8412	WVP4395		WF7198	WVP8385	WVP4408	
WF7149	WVP8419	WVP4431		WF7199	WVP8388	WVP4411	
WF7150	WVP8420	WVP4432		WF7200	WVP8389	WVP4412	

Non-combustible certified 1000 2021-2024 ⇒ DECOPOWER 2024-2027

Non-combustible certified 1000 2021-2024	DECOPOWER 2024-2027	POWER1000 2021-2024	DECOPOWER SELECT 2024-2027
WF7201	WVP8390	WVP4413	
WF7202	WVP8386	WVP4409	
WF7203	WVP8387	WVP4410	
WF7204	WVP8392	WVP4415	
WF7205	WVP8394	WVP4417	
WF7206	WVP8396	WVP4419	
WF7207	WVP8397	WVP4420	
WF7208	WVP8393	WVP4416	
WF7209	WVP8395	WVP4418	
WF7210	WVP8398	WVP4421	
WF7211	WVP8399	WVP4422	
WF7212	WVP8400	WVP4423	
WF7213	WVP8401	WVP4424	
WF7214	WVP8402	WVP4425	
WF7215	WVP8328	WVP4462	
WF7216	WVP8329	WVP4463	
WF7217	WVP8330	WVP4464	
WF7218	WVP8361	WVP4468	
WF7219	WVP8363	WVP4470	
WF7220	WVP8362	WVP4469	
WF7221	WVP8367	WVP4474	
WF7222	WVP8364	WVP4471	
WF7223	WVP8365	WVP4472	
WF7224	WVP8366	WVP4473	
WF7225	WVP8368	WVP4475	
WF7226	WVP8369	WVP4476	
WF7227	WVP8061	WVP4133	
WF7228	WVP8062	WVP4134	
WF7229	WVP8053	WVP4127	
WF7230	WVP8054	WVP4128	
WF7231		WVP4126	
WF7232		WVP4130	
WF7233		WVP4129	
WF7234	WVP8039	WVP4131	WVF1089
WF7235		WVP4132	
WF7236	WVP8060	WVP4147	
WF7237		WVP4148	
WF7238		WVP4149	
WF7239		WVP4150	
WF7240	WVP8040	WVP4121	WVF1081
WF7241	WVP8042	WVP4123	
WF7242	WVP8041	WVP4122	
WF7243	WVP8043	WVP4124	
WF7244	WVP8044	WVP4125	
WF7245	WVP8057	WVP4139	
WF7246		WVP4145	
WF7247	WVP8059	WVP4146	
WF7248	WVP8063	WVP4137	
WF7249	WVP8065	WVP4135	
WF7250	WVP8066	WVP4136	

- TOLI Showrooms are located at Tokyo, Osaka, Nagoya, Sapporo, Fukuoka & Shanghai.
Visitors are advised to contact Global Department or Shanghai office, beforehand.

TOLI Corporation Global Department

2-10-4 Higashi-Shinbashi,
Minato-ku, Tokyo,
105-0021 Japan
Phone : +81-3-5403-2078
Fax : +81-3-5472-6307
<https://toli-overseas.com>
E-mail:toli_contact@toli.co.jp

TOLI Corporation Singapore Branch

1 North Bridge Road, #21-10,
High Street Centre,
179094, Singapore
Phone : +65-3138-5052
Fax : +65-6491-5234
<https://toli-overseas.com>

TOLI (SHANGHAI) Corporation

Room 314, UYAO55 Building 1,
No.55 Yuyao Rd., Jingan, Shanghai
200040 China
Phone : +86-21-6071-0688
Fax : +86-21-6071-0560
<http://www.tolish.com.cn>

TOLI North America Corporation

9247 Research Drive Irvine,
CA 92618, U.S.A.
Phone : +1-910-999-8654
<https://www.toli-na.com>
E-Mail : info@toli-na.com