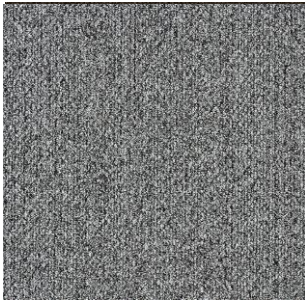




TOLI Carpet Tile

GA-100W SAND <GA-1850W>



GA1851W

5 colorways available



GA1853W/GA1854W

Technical Specifications

Product Description	Nylon Tufted Carpet Tile
Surface	BCF Nylon100%
Dyeing Method	Piece Dyed
Stain Protection	Stain Release (Antifouling Finished)
Base Fabric	Nonwoven Polyester
Backing	PVC and Glass Fiber
Size	500mm x 500mm x 6.5mm
Pile Height	H4.5mm to L3.0mm (multi-level loop pile)
Gauge & Stitches	1/10 th gauge 10stiches/inch
Yarn Weight	17.1 oz/sq.yd
Packing & Net Weight	20pcs/box=5m2/box (25.5kg/box)
Origin	Made in Japan

Performance Testing

Antistatic Property	Less than 1.0kv (JIS L 1021-16, at 23 degrees C, 25%RH)
Electrostatic Propensity	Maximum Average 1.0kv (AATCC 134)
Critical Radiant Flux	Class 2 Average CRF 0.22/cm2 or higher (ASTM E648)
Smoke Density (flaming)	Less than 450 (ASTM E662)
Surface Flammability	Passes DOC FF 1-70 (ASTM D2859)
Flame-retardant Property	Fire Defense Law in Japan Authorized No. E2200144
Dimensional Stability	Less than 0.1% change (ASTM D7570)
Abrasion Resistance by Hexapod Tumble Drum Tester	Appearance Rating 3.0 / Color Change Rating 3.0 (ASTM D5252)
Tuft Bind	10.7 Lbs. (ASTM D1335)
Delamination Strength	5.9 Lbs/Inch (ASTM D3936)
Colorfastness to Light	Rating 5.0 = No Change (AATCC 16)

Way of Installation



quarter turn



monolithic

Environmental Certificate

CRI Green Label Plus	GLP9978
-----------------------------	---------

Product Notes

Specifications are subject to nominal manufacturing variances.
 Material supply and/or manufacturing processes may necessitate changes without notice.
 Colors may vary slightly from dye lot to dye lot.
 The use of chair pads under roller caster chairs may be required in order to maintain sufficient performance of the product.