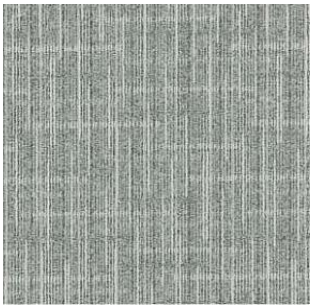




TOLI Carpet Tile

**GA-3600 <texture 4>**



GA3681

12 colorways available



GA3684/GA3685

**Technical Specifications**

<b>Product Description</b>	Nylon Tufted Carpet Tile
<b>Surface</b>	BCF Nylon100%
<b>Dyeing Method</b>	Solution Dyed
<b>Stain Protection</b>	Stain Release (Antifouling Finished)
<b>Base Fabric</b>	Nonwoven Polyester
<b>Backing</b>	PVC and Glass Fiber
<b>Size</b>	500mm x 500mm x 6.8mm
<b>Pile Height</b>	H4.5mm/L3.0mm (Textured loop pile)
<b>Gauge &amp; Stitches</b>	1/10 <sup>th</sup> gauge 12.5 stiches/inch
<b>Yarn Weight</b>	15.3 oz/sq.yd
<b>Packing &amp; Net Weight</b>	16pcs/box=4m2/box (18.0kg/box)
<b>Origin</b>	Made in Japan

**Performance Testing**

<b>Antistatic Property</b>	Less than 1.0kv (JIS L 1021-16, at 23 degrees C, 25%RH)
<b>Electrostatic Propensity</b>	Maximum Average 1.2kv (AATCC 134)
<b>Critical Radiant Flux</b>	Class 1 Average CRF 0.45/cm2 or higher (ASTM E648)
<b>Smoke Density</b>	Less than 450 (ASTM E662)
<b>Surface Flammability</b>	Passes DOC FF 1-70 (ASTM D2859)
<b>Flame-retardant Property</b>	Fire Defense Law in Japan Authorized No. E2120246
<b>Dimensional Stability</b>	Less than 0.1% change (ASTM D7570)
<b>Abrasion Resistance</b> <small>by Hexapod Tumble Drum Tester</small>	Appearance Rating 3.5 / Color Change Rating 3.5 (ASTM D5252)
<b>Tuft Bind</b>	7.1 Lbs. (ASTM D1335)
<b>Delamination Strength</b>	Delamination strength exceeds backing strength. (ASTM D3936)
<b>Colorfastness to Light</b>	Rating 5.0 = No Change (AATCC 16)

**Way of Installation**



quarter turn



monolithic

**Environmental Certificate**

<b>CRI Green Label Plus</b>	GLP9977
-----------------------------	---------

**Product Notes**

Specifications are subject to nominal manufacturing variances.  
 Material supply and/or manufacturing processes may necessitate changes without notice.  
 Colors may vary slightly from dye lot to dye lot.  
 The use of chair pads under roller caster chairs may be required in order to maintain sufficient performance of the product.