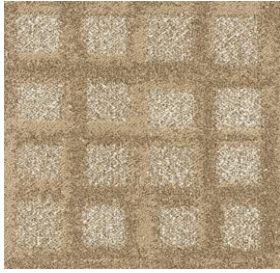




TOLI Carpet Tile

GX-3450 PLAID WAY



GX3451

Technical Specifications	
Product Description	Nylon Tufted Carpet Tile
Surface	BCF Nylon100%
Dyeing Method	Solution Dyed
Stain Protection	Stain Release (Antifouling Finished)
Base Fabric	Nonwoven Polyester
Backing	PVC and Glass Fiber
Size	500mm x 500mm x 9.3mm
Pile Height	H7.0mm to L3.0mm (textured loop pile)
Gauge & Stitches	1/10 th gauge 16.0 stiches/inch
Yarn Weight	25.7 oz/sq.yd
Packing & Net Weight	16pcs/box=4m ² /box (21.5kg/box)
Origin	Made in Japan
Performance Testing	
Antistatic Property	Less than 1.0kv (JIS L 1021-16, at 23 degrees C, 25%RH)
Electrostatic Propensity	Maximum Average 1.8kv (AATCC 134)
Critical Radlant Flux	Class 2 Average CRF 0.22/cm2 or higher (ASTM E648)
Smoke Density (Non-Flaming)	Less than 450 (ASTM E662)
Surface Flammability	Passes DOC FF 1-70 (ASTM D2859)
Flame-retardant Property	Fire Defense Law in Japan Authorized No. E2240106
Dimensional Stability	Less than 0.1% change (ASTM D7570)
Abrasion Resistance by Hexapod Tumble Drum Tester	Appearance Rating 3.0 / Color Change Rating 3.0 (ASTM D5252)
Tuft Blnd	10.0 Lbs. (ASTM D1335)
Delamination Strength	6.0 Lbs/Inch (ASTM D3936)
Colorfastness to Light	Rating 5.0 = No Change (AATCC 16)
Way of Installation	
 monolithic	 quarter turn
Environmental Certificate	
CRI Green Label Plus	GLP9977
Product Notes	
Specifications are subject to nominal manufacturing variances. Material supply and/or manufacturing processes may necessitate changes without notice. Colors may vary slightly from dye lot to dye lot. The use of chair pads under roller caster chairs may be required in order to maintain sufficient performance of the product.	