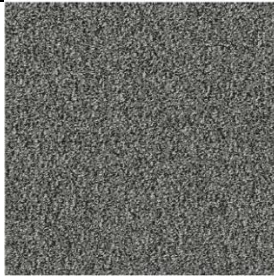




TOLI Carpet Tile

CALMGRAIN <GX-5100>



GX5104

Technical Specifications	
Product Description	Nylon Tufted Carpet Tile
Surface	BCF Nylon100%
Dyeing Method	Solution Dyed
Stain Protection	Stain Release (Antifouling Finished)
Base Fabric	Nonwoven Polyester
Backing	PVC and Glass Fiber
Size	500mm x 500mm x 8.0mm
Pile Height	H 6.5mm / M 3.5mm / L3.0mm (textured loop pile)
Gauge & Stitches	1/12 th gauge 10.0 stiches/inch
Yarn Weight	18.0 oz/sq.yd
Packing & Net Weight	16pcs/box=4m ² /box (23.2kg/box)
Origin	Made in Japan
Performance Testing	
Antistatic Property	Less than 1.0kv (JIS L 1021-16, at 23 degrees C, 25%RH)
Electrostatic Propensity	Maximum Average 1.0kv (AATCC 134)
Critical Radlant Flux	Class 1 Average CRF 0.45/cm2 or higher (ASTM E648)
Smoke Density	Less than 450 (ASTM E662)
Surface Flammability	Passes DOC FF 1-70 (ASTM D2859)
Flame-retardant Property	Fire Defense Law in Japan Authorized No. E2150029
Dimensional Stability	Less than 0.1% change (ASTM D7570)
Abrasion Resistance by Hexapod Tumble Drum Tester	Appearance Rating 2.5 / Color Change Rating 3.0 (ASTM D5252)
Tuft Bind	8.8 Lbs. (ASTM D1335)
Delamination Strength	12.1Lbs/Inch (ASTM D3936)
Colorfastness to Light	Rating 5.0 = No Change (AATCC 16)
Way of Installation	
 quarter turn	 monolithic
Environmental Certificate	
CRI Green Label Plus	GLP9977
Product Notes	
<p>Specifications are subject to nominal manufacturing variances. Material supply and/or manufacturing processes may necessitate changes without notice. Colors may vary slightly from dye lot to dye lot. The use of chair pads under roller caster chairs may be required in order to maintain sufficient performance of the product.</p>	

TOLI Corporation - Global Department
 2-10-4 Higashi-Shinbashi Minato-ku Tokyo 105-0021 Japan
 Phone: 813-5403-2078 Fax: 813-5472-6307