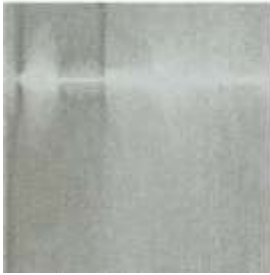


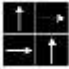


TOLI Carpet Tile

YUISOME



YSM401

Technical Specifications	
Product Description	Nylon Tufted Carpet Tile
Surface	BCF Nylon100%
Dyeing Method	Piece Dyed
Stain Protection	Stain Release (Antifouling Finished)
Base Fabric	Nonwoven Polyester
Backing	PVC and Glass Fiber
Size	500mm x 500mm x 9.0mm
Pile Height	6.0mm (cut pile)
Gauge & Stitches	1/10 th gauge 13.5 stiches/inch
Yarn Weight	29.5 oz/sq.yd
Packing & Net Weight	16pcs/box=4m ² /box (19.6kg/box)
Origin	Made in Japan
Performance Testing	
Antistatic Property	Less than 1.0kv (JIS L 1021-16, at 23 degrees C, 25%RH)
Electrostatic Propensity	Maximum Average 1.0kv (AATCC 134)
Critical Radlant Flux	Class 1 Average CRF 0.45/cm2 or higher (ASTM E648)
Smoke Density (Flaming)	Less than 450 (ASTM E662)
Surface Flammability	Passes DOC FF 1-70 (ASTM D2859)
Flame-retardant Property	Fire Defense Law in Japan Authorized No. E21300269
Dimensional Stability	Less than 0.1% change (ASTM D7570)
Abrasion Resistance by Hexapod Tumble Drum Tester	Appearance Rating 2.0 / Color Change Rating 1.5 (ASTM D5252)
Tuft Bind	3.5 Lbs. (ASTM D1335)
Delamination Strength	12.0 Lbs/Inch (ASTM D3936)
Colorfastness to Light	Rating 5.0 = No Change (AATCC 16)
Way of Installation	
 quarter turn	
Environmental Certificate	
CRI Green Label Plus	GLP9978
Product Notes	
Specifications are subject to nominal manufacturing variances. Material supply and/or manufacturing processes may necessitate changes without notice. Colors may vary slightly from dye lot to dye lot. The use of chair pads under roller caster chairs may be required in order to maintain sufficient performance of the product.	